

**CHRNA2 antibody - middle region**  
**Rabbit Polyclonal Antibody**  
**Catalog # A10149****Specification**

---

**CHRNA2 antibody - middle region - Product Information**

Application	IHC, WB
Primary Accession	<a href="#">P17787</a>
Other Accession	<a href="#">P17787</a> , <a href="#">NP_000739</a> , <a href="#">NM_000748</a>
Reactivity	Human, Mouse, Rat, Pig, Dog, Guinea Pig, Bovine
Predicted Host	Human, Mouse, Pig, Dog, Bovine
Clonality	Rabbit
Calculated MW	Polyclonal 57 kDa kDa

**CHRNA2 antibody - middle region - Additional Information****Gene ID 1141**

Alias Symbol	EFNL3, nAChRB2
<b>Other Names</b>	
Neuronal acetylcholine receptor subunit beta-2, CHRNA2	

**Target/Specificity**

Mutations in nAChRs are found in a rare form of nocturnal frontal lobe epilepsy . Previously, some nAChR mutations have been described that are associated with additional neurological features such as psychiatric disorders or cognitive defects. A new CHRNA2 mutation located in transmembrane region 3 (M3), outside the known ADNFLE mutation cluster. The CHRNA2 mutation I312M, which occurred de novo in twins, markedly increases the receptor's sensitivity to acetylcholine. Phenotypically, the mutation is associated not only with typical ADNFLE, but also with distinct deficits in memory. The cognitive problems are most obvious in tasks requiring the organization and storage of verbal information.

**Format**

Liquid. Purified antibody supplied in 1x PBS buffer with 0.09% (w/v) sodium azide and 2% sucrose.

**Reconstitution & Storage**

Add 100 ul of distilled water. Final anti-CHRNA2 antibody concentration is 1 mg/ml in PBS buffer with 2% sucrose. For longer periods of storage, store at -20°C. Avoid repeat freeze-thaw cycles.

**Precautions**

CHRNA2 antibody - middle region is for research use only and not for use in diagnostic or therapeutic procedures.

**CHRNA2 antibody - middle region - Protein Information**

**Name** CHRNA2

**Function**

After binding acetylcholine, the AChR responds by an extensive change in conformation that affects all subunits and leads to opening of an ion-conducting channel across the plasma membrane permeable to sodium ions.

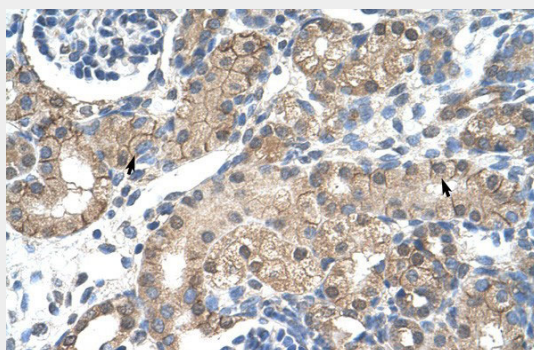
**Cellular Location**

Postsynaptic cell membrane; Multi-pass membrane protein. Cell membrane; Multi-pass membrane protein

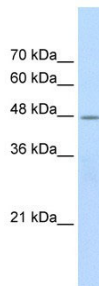
**CHRNA2 antibody - middle region - Protocols**

Provided below are standard protocols that you may find useful for product applications.

- [Western Blot](#)
- [Blocking Peptides](#)
- [Dot Blot](#)
- [Immunohistochemistry](#)
- [Immunofluorescence](#)
- [Immunoprecipitation](#)
- [Flow Cytometry](#)
- [Cell Culture](#)

**CHRNA2 antibody - middle region - Images**

CHRNA2 antibody - middle region (AI10149) in Human kidney cells using Immunohistochemistry  
Human kidney



CHRNA2 antibody - middle region (AI10149) in Human Jurkat cells using Western Blot  
WB Suggested Anti-CHRNA2 Antibody Titration: 2.5µg/ml  
Positive Control: Jurkat cell lysate  
CHRNA2 is supported by BioGPS gene expression data to be expressed in Jurkat

**CHRNA2 antibody - middle region - Background**

This is a rabbit polyclonal antibody against CHRNA2. It was validated on Western Blot and immunohistochemistry by Abgent. At Abgent we manufacture rabbit polyclonal antibodies on a large scale (200-1000 products/month) of high throughput manner. Our antibodies are peptide based and protein family oriented. We usually provide antibodies covering each member of a whole protein family of your interest. We also use our best efforts to provide you antibodies recognize various epitopes of a target protein. For availability of antibody needed for your experiment, please inquire ([sales@abgent.com](mailto:sales@abgent.com)).