

Tsc22d4 Antibody - N-terminal region
Rabbit Polyclonal Antibody
Catalog # AI10170**Specification**

Tsc22d4 Antibody - N-terminal region - Product Information

Application	WB
Primary Accession	Q3B8N7
Other Accession	NM_001044284 , NP_001037749
Reactivity	Human, Mouse, Rat, Horse, Bovine, Dog
Predicted	Human, Mouse, Rat, Pig, Bovine, Guinea Pig, Dog
Host	Rabbit
Clonality	Polyclonal
Calculated MW	42kDa KDa

Tsc22d4 Antibody - N-terminal region - Additional Information**Gene ID** 684980**Alias Symbol** **MGC125073****Other Names**

TSC22 domain family protein 4, TSC22-related-inducible leucine zipper protein 2, Thg-1pit, Tsc22d4, Tilz2

Format

Liquid. Purified antibody supplied in 1x PBS buffer with 0.09% (w/v) sodium azide and 2% sucrose.

Reconstitution & Storage

Add 50 ul of distilled water. Final anti-Tsc22d4 antibody concentration is 1 mg/ml in PBS buffer with 2% sucrose. For longer periods of storage, store at 20°C. Avoid repeat freeze-thaw cycles.

Precautions

Tsc22d4 Antibody - N-terminal region is for research use only and not for use in diagnostic or therapeutic procedures.

Tsc22d4 Antibody - N-terminal region - Protein Information**Name** Tsc22d4 {ECO:0000312|RGD:1584380}**Function**

Binds DNA and acts as a transcriptional repressor (By similarity). Involved in the regulation of systematic glucose homeostasis and insulin sensitivity, via transcriptional repression of downstream insulin signaling targets such as OBP2A/LCN13 (By similarity). Acts as a negative regulator of lipogenic gene expression in hepatocytes and thereby mediates the control of very low-density lipoprotein release (By similarity). May play a role in neurite elongation and survival (By similarity).

Cellular Location

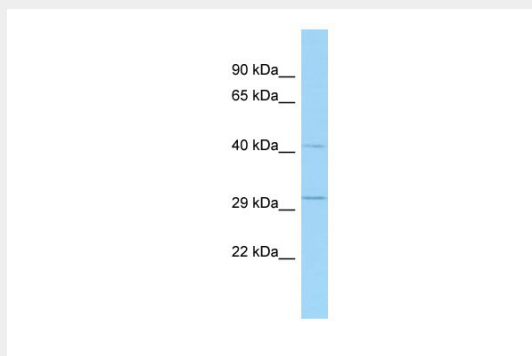
Nucleus {ECO:0000250|UniProtKB:Q9EQN3}. Cytoplasm {ECO:0000250|UniProtKB:Q9EQN3}. Cell projection, dendrite {ECO:0000250|UniProtKB:Q9EQN3}. Synapse {ECO:0000250|UniProtKB:Q9EQN3} Note=Localizes away from the nucleus to neurite processes and synaptic termini as cerebellar granular neurons differentiate (By similarity) Accumulates in the cytoplasm of differentiated Purkinje cells (By similarity). Localized to both the cytoplasm and nucleus in immature cerebellar granular neurons and atrophic Purkinje cells (By similarity). {ECO:0000250|UniProtKB:Q9EQN3}

Tsc22d4 Antibody - N-terminal region - Protocols

Provided below are standard protocols that you may find useful for product applications.

- [Western Blot](#)
- [Blocking Peptides](#)
- [Dot Blot](#)
- [Immunohistochemistry](#)
- [Immunofluorescence](#)
- [Immunoprecipitation](#)
- [Flow Cytometry](#)
- [Cell Culture](#)

Tsc22d4 Antibody - N-terminal region - Images



WB Suggested Anti-Tsc22d4 Antibody

Titration: 1. µg/ml

Positive Control: Rat Thymus