

**Hand2 antibody - C-terminal region**  
**Rabbit Polyclonal Antibody**  
**Catalog # AI10185****Specification**

---

**Hand2 antibody - C-terminal region - Product Information**

Application	WB
Primary Accession	<a href="#">Q61039</a>
Other Accession	<a href="#">NM_010402</a> , <a href="#">NP_034532</a>
Reactivity	Human, Mouse, Rat, Zebrafish, Pig, Horse, Bovine, Dog
Predicted	Human, Mouse, Rat, Zebrafish, Pig, Chicken, Guinea Pig, Dog
Host	Rabbit
Clonality	Polyclonal
Calculated MW	24kDa KDa

**Hand2 antibody - C-terminal region - Additional Information****Gene ID** 15111**Alias Symbol** AI225906, AI661148, Ehand2, Hed, Th2, Thing2, bHLHa26, dHAND**Other Names**

Heart- and neural crest derivatives-expressed protein 2, Deciduum, heart, autonomic nervous system and neural crest derivatives-expressed protein 2, dHAND, Helix-loop-helix transcription factor expressed in embryo and deciduum, Thing-2, Hand2, Dhand, Hed, Thing2

**Format**

Liquid. Purified antibody supplied in 1x PBS buffer with 0.09% (w/v) sodium azide and 2% sucrose.

**Reconstitution & Storage**

Add 50 ul of distilled water. Final anti-Hand2 antibody concentration is 1 mg/ml in PBS buffer with 2% sucrose. For longer periods of storage, store at 20°C. Avoid repeat freeze-thaw cycles.

**Precautions**

Hand2 antibody - C-terminal region is for research use only and not for use in diagnostic or therapeutic procedures.

**Hand2 antibody - C-terminal region - Protein Information****Name** Hand2**Synonyms** Dhand, Hed, Thing2**Function**

Essential for cardiac morphogenesis, particularly for the formation of the right ventricle and of the aortic arch arteries. Required for vascular development and regulation of angiogenesis, possibly

through a VEGF signaling pathway. Also plays an important role in limb development, particularly in the establishment of anterior- posterior polarization, acting as an upstream regulator of sonic hedgehog (SHH) induction in the limb bud. Is involved in the development of branchial arches, which give rise to unique structures in the head and neck. Binds DNA on E-box consensus sequence 5'-CANNTG- 3'.

**Cellular Location**

Nucleus {ECO:0000255|PROSITE-ProRule:PRU00981}.

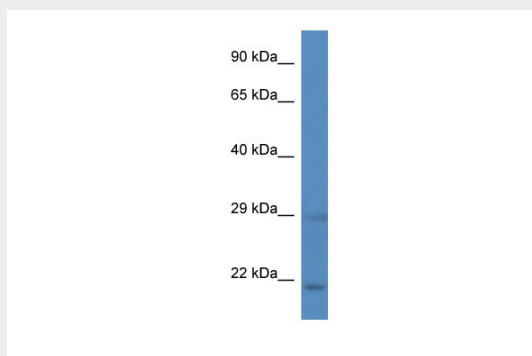
**Tissue Location**

Heart and aorta.

**Hand2 antibody - C-terminal region - Protocols**

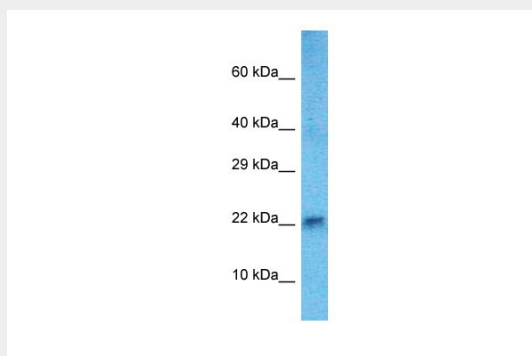
Provided below are standard protocols that you may find useful for product applications.

- [Western Blot](#)
- [Blocking Peptides](#)
- [Dot Blot](#)
- [Immunohistochemistry](#)
- [Immunofluorescence](#)
- [Immunoprecipitation](#)
- [Flow Cytometry](#)
- [Cell Culture](#)

**Hand2 antibody - C-terminal region - Images****WB Suggested Anti-Hand2 Antibody**

**Titration: 1. µg/ml**

Positive Control: Mouse Heart



**Host:**Rabbit  
**Target Name:**Hand2  
**Sample Tissue:** Mouse Heart lysates  
**Antibody Dilution:**1.µg/ml