

**Dr1 antibody - middle region**  
**Rabbit Polyclonal Antibody**  
**Catalog # AI10217****Specification**

---

**Dr1 antibody - middle region - Product Information**

Application	WB
Primary Accession	<a href="#">O91WV0</a>
Other Accession	<a href="#">NM_026106</a> , <a href="#">NP_080382</a>
Reactivity	Human, Mouse, Rat, Zebrafish, Pig, Horse, Bovine, Dog
Predicted Host	Human, Mouse, Zebrafish, Bovine, Dog
Clonality	Rabbit
Calculated MW	Polyclonal 19kDa KDa

**Dr1 antibody - middle region - Additional Information****Gene ID** 13486**Alias Symbol** 1700121L09Rik, Dr1l, NC2, NC2beta**Other Names**

Protein Dr1, Down-regulator of transcription 1, Negative cofactor 2-beta, NC2-beta, TATA-binding protein-associated phosphoprotein, Dr1

**Format**

Liquid. Purified antibody supplied in 1x PBS buffer with 0.09% (w/v) sodium azide and 2% sucrose.

**Reconstitution & Storage**

Add 50 ul of distilled water. Final anti-Dr1 antibody concentration is 1 mg/ml in PBS buffer with 2% sucrose. For longer periods of storage, store at 20°C. Avoid repeat freeze-thaw cycles.

**Precautions**

Dr1 antibody - middle region is for research use only and not for use in diagnostic or therapeutic procedures.

**Dr1 antibody - middle region - Protein Information****Name** Dr1**Function**

The association of the DR1/DRAP1 heterodimer with TBP results in a functional repression of both activated and basal transcription of class II genes. This interaction precludes the formation of a transcription-competent complex by inhibiting the association of TFIIA and/or TFIIB with TBP. Can bind to DNA on its own. Component of the ATAC complex, a complex with histone acetyltransferase activity on histones H3 and H4 (By similarity).

**Cellular Location**

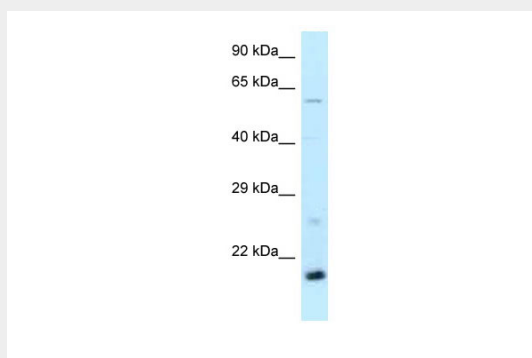
Nucleus.

### Dr1 antibody - middle region - Protocols

Provided below are standard protocols that you may find useful for product applications.

- [Western Blot](#)
- [Blocking Peptides](#)
- [Dot Blot](#)
- [Immunohistochemistry](#)
- [Immunofluorescence](#)
- [Immunoprecipitation](#)
- [Flow Cytometry](#)
- [Cell Culture](#)

### Dr1 antibody - middle region - Images



#### WB Suggested Anti-Dr1 Antibody

**Titration: 1. µg/ml**

Positive Control: Mouse Kidney