

**Rnf166 antibody - middle region**  
**Rabbit Polyclonal Antibody**  
**Catalog # AI10316****Specification**

---

**Rnf166 antibody - middle region - Product Information**

Application	WB
Primary Accession	<a href="#">Q3U9F6</a>
Other Accession	<a href="#">NM_001033142</a> , <a href="#">NP_001028314</a>
Reactivity	Human, Mouse, Rat, Zebrafish, Horse, Bovine, Dog
Predicted Host	Mouse, Chicken, Bovine, Dog
Clonality	Rabbit
Calculated MW	Polyclonal 26kDa KDa

**Rnf166 antibody - middle region - Additional Information****Gene ID** 68718**Alias Symbol** 1110031E24Rik, AW555115, Zfp313I  
**Other Names**  
RING finger protein 166, Rnf166**Format**

Liquid. Purified antibody supplied in 1x PBS buffer with 0.09% (w/v) sodium azide and 2% sucrose.

**Reconstitution & Storage**

Add 50 ul of distilled water. Final anti-Rnf166 antibody concentration is 1 mg/ml in PBS buffer with 2% sucrose. For longer periods of storage, store at 20°C. Avoid repeat freeze-thaw cycles.

**Precautions**

Rnf166 antibody - middle region is for research use only and not for use in diagnostic or therapeutic procedures.

**Rnf166 antibody - middle region - Protein Information****Name** Rnf166**Function**

E3 ubiquitin-protein ligase that promotes the ubiquitination of different substrates. In turn, participates in different biological processes including interferon production or autophagy. Plays a role in the activation of RNA virus-induced interferon-beta production by promoting the ubiquitination of TRAF3 and TRAF6. Also plays a role in the early recruitment of autophagy adaptors to bacteria. Mediates 'Lys- 29' and 'Lys-33'-linked ubiquitination of SQSTM1 leading to xenophagic targeting of bacteria and inhibition of their replication.

**Cellular Location**

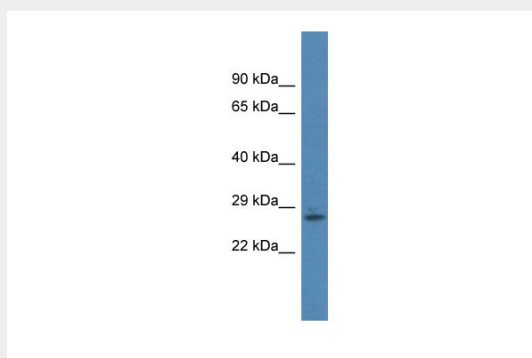
Cytoplasm {ECO:0000250|UniProtKB:Q96A37}.

### **Rnf166 antibody - middle region - Protocols**

Provided below are standard protocols that you may find useful for product applications.

- [Western Blot](#)
- [Blocking Peptides](#)
- [Dot Blot](#)
- [Immunohistochemistry](#)
- [Immunofluorescence](#)
- [Immunoprecipitation](#)
- [Flow Cytometry](#)
- [Cell Culture](#)

### **Rnf166 antibody - middle region - Images**



#### **WB Suggested Anti-Rnf166 Antibody**

**Titration: 1. µg/ml**

Positive Control: Mouse Pancreas