

**Aes Antibody - N-terminal region**  
**Rabbit Polyclonal Antibody**  
**Catalog # AI10344****Specification**

---

**Aes Antibody - N-terminal region - Product Information**

Application	WB
Primary Accession	<a href="#">P63002</a>
Other Accession	<a href="#">NM_010347</a> , <a href="#">NP_034477</a>
Reactivity	Human, Mouse, Rat, Bovine
Predicted	Human, Mouse, Rat, Pig, Bovine, Guinea Pig
Host	Rabbit
Clonality	Polyclonal
Calculated MW	22kDa KDa

**Aes Antibody - N-terminal region - Additional Information****Gene ID** 14797**Alias Symbol** AL024115, Grg, Grg5**Other Names**

Amino-terminal enhancer of split, Amino enhancer of split, Grg-5, Groucho-related protein 5, Protein ESP1, Protein GRG, Aes, Esp1, Grg, Grg5

**Format**

Liquid. Purified antibody supplied in 1x PBS buffer with 0.09% (w/v) sodium azide and 2% sucrose.

**Reconstitution & Storage**

Add 50 ul of distilled water. Final anti-Aes antibody concentration is 1 mg/ml in PBS buffer with 2% sucrose. For longer periods of storage, store at 20°C. Avoid repeat freeze-thaw cycles.

**Precautions**

Aes Antibody - N-terminal region is for research use only and not for use in diagnostic or therapeutic procedures.

**Aes Antibody - N-terminal region - Protein Information****Name** Tle5 {ECO:0000305}**Function**

Transcriptional corepressor. Acts as a dominant repressor towards other family members. Inhibits NF-kappa-B-regulated gene expression. May be required for the initiation and maintenance of the differentiated state. Essential for the transcriptional repressor activity of SIX3 during retina and lens development.

**Cellular Location**

Nucleus.

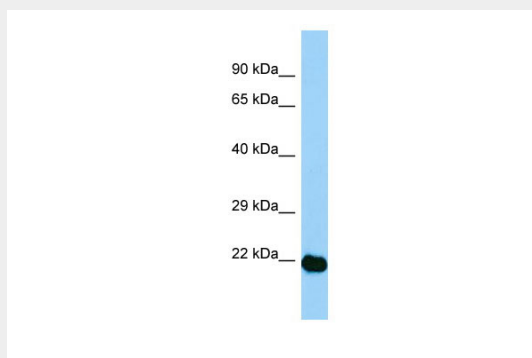
**Tissue Location**

Ubiquitously expressed in developing embryos by midgestation, a wide expression is conserved in adult. In mouse, abundantly expressed in muscle, heart and brain

**Aes Antibody - N-terminal region - Protocols**

Provided below are standard protocols that you may find useful for product applications.

- [Western Blot](#)
- [Blocking Peptides](#)
- [Dot Blot](#)
- [Immunohistochemistry](#)
- [Immunofluorescence](#)
- [Immunoprecipitation](#)
- [Flow Cytometry](#)
- [Cell Culture](#)

**Aes Antibody - N-terminal region - Images****WB Suggested Anti-Aes Antibody**

**Titration: 1. µg/ml**

Positive Control: Mouse Stomach