

**Pcbd1 antibody - C-terminal region**  
**Rabbit Polyclonal Antibody**  
**Catalog # AI10366****Specification**

---

**Pcbd1 antibody - C-terminal region - Product Information**

Application	WB
Primary Accession	<a href="#">P61458</a>
Other Accession	<a href="#">NM_025273</a> , <a href="#">NP_079549</a>
Reactivity	Human, Mouse, Rat, Zebrafish, Pig, Horse, Yeast, Bovine, Dog
Predicted Host	Human, Zebrafish, Pig, Guinea Pig, Dog
Clonality	Rabbit
Calculated MW	Polyclonal 12kDa KDa

**Pcbd1 antibody - C-terminal region - Additional Information****Gene ID** 13180**Alias Symbol** **Dcoh, Pcbd**  
**Other Names**

Pterin-4-alpha-carbinolamine dehydratase, PHS, 4.2.1.96, 4-alpha-hydroxy-tetrahydropterin dehydratase, Dimerization cofactor of hepatocyte nuclear factor 1-alpha, DCoH, Dimerization cofactor of HNF1, Phenylalanine hydroxylase-stimulating protein, Pterin carbinolamine dehydratase, PCD, Pcbd1, Dcoh, Pcbd

**Format**

Liquid. Purified antibody supplied in 1x PBS buffer with 0.09% (w/v) sodium azide and 2% sucrose.

**Reconstitution & Storage**

Add 50 ul of distilled water. Final anti-Pcbd1 antibody concentration is 1 mg/ml in PBS buffer with 2% sucrose. For longer periods of storage, store at 20°C. Avoid repeat freeze-thaw cycles.

**Precautions**

Pcbd1 antibody - C-terminal region is for research use only and not for use in diagnostic or therapeutic procedures.

**Pcbd1 antibody - C-terminal region - Protein Information****Name** Pcbd1**Synonyms** Dcoh, Pcbd**Function**

Involved in tetrahydrobiopterin biosynthesis. Seems to both prevent the formation of 7-pterins and accelerate the formation of quinonoid-BH2. Coactivator for HNF1A-dependent transcription. Regulates the dimerization of homeodomain protein HNF1A and enhances its transcriptional

activity (By similarity). Also acts as a coactivator for HNF1B-dependent transcription (By similarity).

#### Cellular Location

Cytoplasm {ECO:0000250|UniProtKB:P61459}. Nucleus {ECO:0000250|UniProtKB:P61459}.  
Note=Recruited to the nucleus through the interaction with HNF1B.  
{ECO:0000250|UniProtKB:P35680}

#### Tissue Location

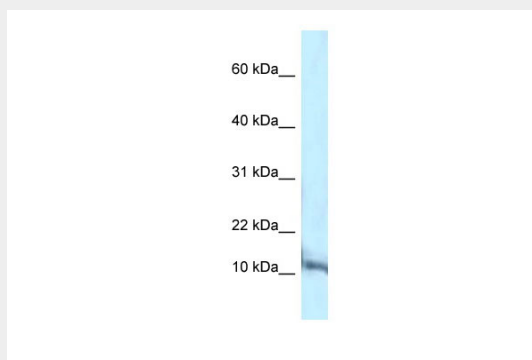
Mainly expressed in the liver, in pancreatic cells, and in the kidney, especially in the distal convoluted tubule, in the cortical thick ascending limb of Henle's loop and in the connecting tubule.

### Pcbd1 antibody - C-terminal region - Protocols

Provided below are standard protocols that you may find useful for product applications.

- [Western Blot](#)
- [Blocking Peptides](#)
- [Dot Blot](#)
- [Immunohistochemistry](#)
- [Immunofluorescence](#)
- [Immunoprecipitation](#)
- [Flow Cytometry](#)
- [Cell Culture](#)

### Pcbd1 antibody - C-terminal region - Images



#### WB Suggested Anti-Pcbd1 Antibody

**Titration: 1. µg/ml**

Positive Control: Mouse Brain