

Nr0b1 Antibody - C-terminal region
Rabbit Polyclonal Antibody
Catalog # AI10431**Specification**

Nr0b1 Antibody - C-terminal region - Product Information

Application	WB
Primary Accession	Q61066
Other Accession	NM_007430 , NP_031456
Reactivity	Human, Mouse, Rat, Pig, Horse, Bovine, Dog
Predicted	Human, Mouse, Rat, Pig, Bovine, Guinea Pig, Dog
Host	Rabbit
Clonality	Polyclonal
Calculated MW	52kDa KDa

Nr0b1 Antibody - C-terminal region - Additional Information**Gene ID** 11614**Alias Symbol** AHX, Ahc, Ahch, DAX-1, Dax1**Other Names**

Nuclear receptor subfamily 0 group B member 1, Nuclear receptor DAX-1, Nr0b1, Ahch, Dax1

Format

Liquid. Purified antibody supplied in 1x PBS buffer with 0.09% (w/v) sodium azide and 2% sucrose.

Reconstitution & Storage

Add 50 ul of distilled water. Final anti-Nr0b1 antibody concentration is 1 mg/ml in PBS buffer with 2% sucrose. For longer periods of storage, store at 20°C. Avoid repeat freeze-thaw cycles.

Precautions

Nr0b1 Antibody - C-terminal region is for research use only and not for use in diagnostic or therapeutic procedures.

Nr0b1 Antibody - C-terminal region - Protein Information**Name** Nr0b1**Synonyms** Ahch, Dax1**Function**

Orphan nuclear receptor. Component of a cascade required for the development of the hypothalamic-pituitary-adrenal-gonadal axis. Acts as a coregulatory protein that inhibits the transcriptional activity of other nuclear receptors through heterodimeric interactions. May also have a role in the development of the embryo and in the maintenance of embryonic stem cell pluripotency (By similarity).

Cellular Location

Nucleus. Cytoplasm. Note=Shuttles between the cytoplasm and nucleus. Homodimers exits in the cytoplasm and in the nucleus (By similarity).

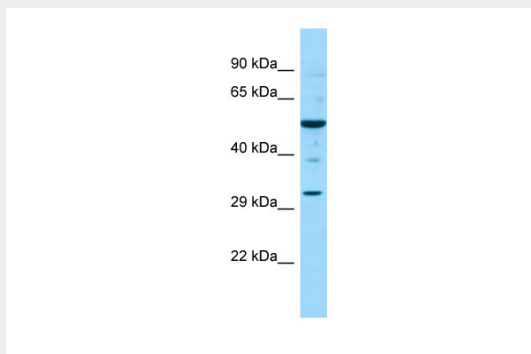
Tissue Location

Expressed in adult cerebral cortex, spinal cord, thymus, heart, lung, ovary, testis, adrenal gland, hypothalamus, spleen and kidney.

Nr0b1 Antibody - C-terminal region - Protocols

Provided below are standard protocols that you may find useful for product applications.

- [Western Blot](#)
- [Blocking Peptides](#)
- [Dot Blot](#)
- [Immunohistochemistry](#)
- [Immunofluorescence](#)
- [Immunoprecipitation](#)
- [Flow Cytometry](#)
- [Cell Culture](#)

Nr0b1 Antibody - C-terminal region - Images**WB Suggested Anti-Nrb1 Antibody**

Titration: 1. µg/ml

Positive Control: Mouse Testis