

**Pole3 antibody - C-terminal region**  
**Rabbit Polyclonal Antibody**  
**Catalog # AI10456****Specification**

---

**Pole3 antibody - C-terminal region - Product Information**

Application	WB
Primary Accession	<a href="#">O9JKP7</a>
Other Accession	<a href="#">NM_021498</a> , <a href="#">NP_067473</a>
Reactivity	Human, Mouse, Rat, Zebrafish, Pig, Horse, Bovine, Dog
Predicted	Zebrafish, Dog
Host	Rabbit
Clonality	Polyclonal
Calculated MW	17kDa KDa

**Pole3 antibody - C-terminal region - Additional Information****Gene ID** 59001**Alias Symbol** 1810034K18Rik, YBL1**Other Names**

DNA polymerase epsilon subunit 3, 2.7.7.7, DNA polymerase II subunit 3, DNA polymerase epsilon subunit p17, NF-YB-like protein, YB-like protein 1, YBL1, Pole3

**Format**

Liquid. Purified antibody supplied in 1x PBS buffer with 0.09% (w/v) sodium azide and 2% sucrose.

**Reconstitution & Storage**

Add 50 ul of distilled water. Final anti-Pole3 antibody concentration is 1 mg/ml in PBS buffer with 2% sucrose. For longer periods of storage, store at 20°C. Avoid repeat freeze-thaw cycles.

**Precautions**

Pole3 antibody - C-terminal region is for research use only and not for use in diagnostic or therapeutic procedures.

**Pole3 antibody - C-terminal region - Protein Information****Name** Pole3**Function**

Accessory component of the DNA polymerase epsilon complex (By similarity). Participates in DNA repair and in chromosomal DNA replication (By similarity). Forms a complex with CHRA1 and binds naked DNA, which is then incorporated into chromatin, aided by the nucleosome-remodeling activity of ISWI/SNF2H and ACF1 (By similarity). Does not enhance nucleosome sliding activity of the ACF-5 ISWI chromatin remodeling complex (By similarity).

**Cellular Location**

Nucleus.

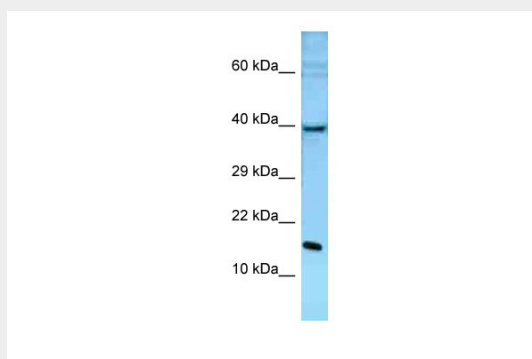
**Tissue Location**

Ubiquitously expressed.

**Pole3 antibody - C-terminal region - Protocols**

Provided below are standard protocols that you may find useful for product applications.

- [Western Blot](#)
- [Blocking Peptides](#)
- [Dot Blot](#)
- [Immunohistochemistry](#)
- [Immunofluorescence](#)
- [Immunoprecipitation](#)
- [Flow Cytometry](#)
- [Cell Culture](#)

**Pole3 antibody - C-terminal region - Images****WB Suggested Anti-Pole3 Antibody**

**Titration: 1. µg/ml**

Positive Control: Mouse Liver