

**SOX12 antibody - C-terminal region**  
**Rabbit Polyclonal Antibody**  
**Catalog # AI10496****Specification**

---

**SOX12 antibody - C-terminal region - Product Information**

Application	WB
Primary Accession	<a href="#">O15370</a>
Other Accession	<a href="#">NM_006943</a> , <a href="#">NP_008874</a>
Reactivity	Human, Mouse, Rat, Pig, Horse, Dog
Predicted	Human, Mouse, Rat, Guinea Pig, Dog
Host	Rabbit
Clonality	Polyclonal
Calculated MW	34kDa KDa

**SOX12 antibody - C-terminal region - Additional Information****Gene ID** 6666

Alias Symbol	<b>SOX22</b>
<b>Other Names</b>	
Transcription factor SOX-12, Protein SOX-22, SOX12, SOX22	

**Format**

Liquid. Purified antibody supplied in 1x PBS buffer with 0.09% (w/v) sodium azide and 2% sucrose.

**Reconstitution & Storage**

Add 100 ul of distilled water. Final anti-SOX12 antibody concentration is 1 mg/ml in PBS buffer with 2% sucrose. For longer periods of storage, store at 20°C. Avoid repeat freeze-thaw cycles.

**Precautions**

SOX12 antibody - C-terminal region is for research use only and not for use in diagnostic or therapeutic procedures.

**SOX12 antibody - C-terminal region - Protein Information****Name** SOX12**Synonyms** SOX22**Function**

Transcription factor that binds to DNA at the consensus sequence 5'-ACCAAAG-3' (By similarity). Acts as a transcriptional activator (By similarity). Binds cooperatively with POU3F2/BRN2 or POU3F1/OCT6 to gene promoters, which enhances transcriptional activation (By similarity). Involved in the differentiation of naive CD4-positive T-cells into peripherally induced regulatory T (pT reg) cells under inflammatory conditions (By similarity). Binds to the promoter region of the FOXP3 gene and promotes its transcription, and might thereby contribute to pT reg cell differentiation in the spleen and lymph nodes during inflammation (By similarity). Plays a

redundant role with SOX4 and SOX11 in cell survival of developing tissues such as the neural tube, branchial arches and somites, thereby contributing to organogenesis (By similarity).

#### Cellular Location

Nucleus {ECO:0000255|PROSITE-ProRule:PRU00267, ECO:0000269|PubMed:9215677}

#### Tissue Location

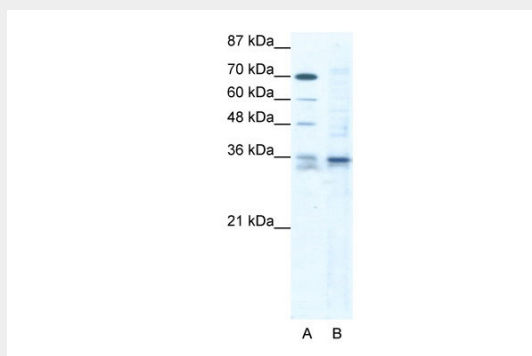
Expressed most abundantly in the CNS (PubMed:9215677). Expressed in the heart, pancreas, thymus, testis and ovary (PubMed:9215677). Weakly expressed in brain, placenta, lung, liver, skeletal muscle, kidney, spleen, prostate, small intestine, colon, and peripheral blood lymphocytes (PubMed:9215677)

### SOX12 antibody - C-terminal region - Protocols

Provided below are standard protocols that you may find useful for product applications.

- [Western Blot](#)
- [Blocking Peptides](#)
- [Dot Blot](#)
- [Immunohistochemistry](#)
- [Immunofluorescence](#)
- [Immunoprecipitation](#)
- [Flow Cytometry](#)
- [Cell Culture](#)

### SOX12 antibody - C-terminal region - Images



#### WB Suggested Anti-SOX12 Antibody

**Titration: 1.25 µg/ml**

Positive Control: Jurkat Whole Cell

### SOX12 antibody - C-terminal region - References

Kato,N., et al., (2001) Mol. Endocrinol. 15 (3), 353-362  
Reconstitution and Storage:For short term use, store at 2-8C up to 1 week. For long term storage, store at -20C in small aliquots to prevent freeze-thaw cycles.