

SSTR4 antibody - middle region
Rabbit Polyclonal Antibody
Catalog # AI10502**Specification**

SSTR4 antibody - middle region - Product Information

Application	WB
Primary Accession	P31391
Other Accession	NM_001052 , NP_001043
Reactivity	Mouse
Predicted	Mouse
Host	Rabbit
Clonality	Polyclonal
Calculated MW	42kDa KDa

SSTR4 antibody - middle region - Additional Information**Gene ID** 6754**Alias Symbol** SS4R, SS4-R, SS-4-R**Other Names**

Somatostatin receptor type 4, SS-4-R, SS4-R, SS4R, SSTR4

Format

Liquid. Purified antibody supplied in 1x PBS buffer with 0.09% (w/v) sodium azide and 2% sucrose.

Reconstitution & Storage

Add 100 ul of distilled water. Final anti-SSTR4 antibody concentration is 1 mg/ml in PBS buffer with 2% sucrose. For longer periods of storage, store at 20°C. Avoid repeat freeze-thaw cycles.

Precautions

SSTR4 antibody - middle region is for research use only and not for use in diagnostic or therapeutic procedures.

SSTR4 antibody - middle region - Protein Information**Name** SSTR4**Function**

Receptor for somatostatin-14. The activity of this receptor is mediated by G proteins which inhibits adenylyl cyclase. It is functionally coupled not only to inhibition of adenylyl cyclase, but also to activation of both arachidonate release and mitogen-activated protein (MAP) kinase cascade. Mediates antiproliferative action of somatostatin in tumor cells.

Cellular Location

Cell membrane; Multi-pass membrane protein.

Tissue Location

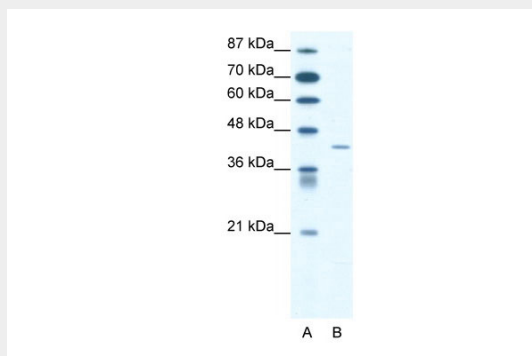
Specifically expressed in fetal and adult brain, lung tissue, stomach, and in lesser quantities in the kidney, pituitary and adrenals

SSTR4 antibody - middle region - Protocols

Provided below are standard protocols that you may find useful for product applications.

- [Western Blot](#)
- [Blocking Peptides](#)
- [Dot Blot](#)
- [Immunohistochemistry](#)
- [Immunofluorescence](#)
- [Immunoprecipitation](#)
- [Flow Cytometry](#)
- [Cell Culture](#)

SSTR4 antibody - middle region - Images



WB Suggested Anti-SSTR4 Antibody

Titration: 1.25 µg/ml

Positive Control: Jurkat Whole Cell

SSTR4 antibody - middle region - References

Pasquali,D., et al., (2002) J. Clin. Endocrinol. Metab. 87 (11), 5125-5129
Reconstitution and Storage: For short term use, store at 2-8C up to 1 week. For long term storage, store at -20C in small aliquots to prevent freeze-thaw cycles.