

**Hmbox1 antibody - C-terminal region**  
**Rabbit Polyclonal Antibody**  
**Catalog # AI10533****Specification**

---

**Hmbox1 antibody - C-terminal region - Product Information**

Application	WB
Primary Accession	<a href="#">Q8BJA3</a>
Other Accession	<a href="#">NM_177338</a> , <a href="#">NP_796312</a>
Reactivity	Human, Mouse, Rat, Zebrafish, Pig, Horse, Bovine, Dog
Predicted	Human, Mouse, Rat, Zebrafish, Pig, Chicken, Bovine, Dog
Host	Rabbit
Clonality	Polyclonal
Calculated MW	47kDa KDa

**Hmbox1 antibody - C-terminal region - Additional Information****Gene ID** 219150**Alias Symbol** **AI451877, AI604847, F830020°C16Rik**  
**Other Names**  
Homeobox-containing protein 1, Hmbox1**Format**

Liquid. Purified antibody supplied in 1x PBS buffer with 0.09% (w/v) sodium azide and 2% sucrose.

**Reconstitution & Storage**

Add 50 ul of distilled water. Final anti-Hmbox1 antibody concentration is 1 mg/ml in PBS buffer with 2% sucrose. For longer periods of storage, store at 20°C. Avoid repeat freeze-thaw cycles.

**Precautions**

Hmbox1 antibody - C-terminal region is for research use only and not for use in diagnostic or therapeutic procedures.

**Hmbox1 antibody - C-terminal region - Protein Information****Name** Hmbox1**Function**

Binds directly to 5'-TTAGGG-3' repeats in telomeric DNA (By similarity). Associates with the telomerase complex at sites of active telomere processing and positively regulates telomere elongation (By similarity). Important for TERT binding to chromatin, indicating a role in recruitment of the telomerase complex to telomeres (PubMed:[23685356](http://www.uniprot.org/citations/23685356)). Also plays a role in the alternative lengthening of telomeres (ALT) pathway in telomerase-negative cells where it promotes formation and/or maintenance of ALT-associated promyelocytic leukemia bodies

(APBs) (By similarity). Enhances formation of telomere C-circles in ALT cells, suggesting a possible role in telomere recombination (By similarity). Might also be involved in the DNA damage response at telomeres (By similarity).

#### Cellular Location

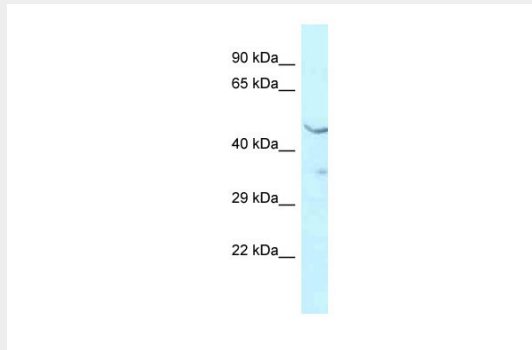
Nucleus. Cytoplasm {ECO:0000250|UniProtKB:Q6NT76}. Chromosome, telomere. Nucleus, Cajal body {ECO:0000250|UniProtKB:Q6NT76}. Nucleus, PML body {ECO:0000250|UniProtKB:Q6NT76}. Note=Predominantly detected in cytoplasm. Localizes in a dynamic manner to actively processed telomeres. Localizes to the periphery of Cajal bodies. Associates with PML nuclear bodies in telomerase-negative cells {ECO:0000250|UniProtKB:Q6NT76}

#### Hmbox1 antibody - C-terminal region - Protocols

Provided below are standard protocols that you may find useful for product applications.

- [Western Blot](#)
- [Blocking Peptides](#)
- [Dot Blot](#)
- [Immunohistochemistry](#)
- [Immunofluorescence](#)
- [Immunoprecipitation](#)
- [Flow Cytometry](#)
- [Cell Culture](#)

#### Hmbox1 antibody - C-terminal region - Images



#### WB Suggested Anti-Hmbox1 Antibody

**Titration: 1. µg/ml**

Positive Control: Mouse Kidney