

TFB1M antibody - N-terminal region
Rabbit Polyclonal Antibody
Catalog # AI10684**Specification**

TFB1M antibody - N-terminal region - Product Information

Application	IHC, WB
Primary Accession	Q8WVM0
Other Accession	NM_016020 , NP_057104
Reactivity	Human, Rat, Rabbit, Zebrafish, Horse, Bovine, Dog
Predicted Host	Pig, Chicken, Horse, Bovine
Clonality	Rabbit
Calculated MW	Polyclonal 39kDa KDa

TFB1M antibody - N-terminal region - Additional Information**Gene ID** 51106**Alias Symbol** CGI-75, CGI75, mtTFB, mtTFB1**Other Names**

Dimethyladenosine transferase 1, mitochondrial, 2.1.1.-, Mitochondrial 12S rRNA dimethylase 1, Mitochondrial transcription factor B1, h-mtTFB, h-mtTFB1, hTFB1M, mtTFB1, S-adenosylmethionine-6-N', N'-adenosyl(rRNA) dimethyltransferase 1, TFB1M

Format

Liquid. Purified antibody supplied in 1x PBS buffer with 0.09% (w/v) sodium azide and 2% sucrose.

Reconstitution & Storage

Add 50 ul of distilled water. Final anti-TFB1M antibody concentration is 1 mg/ml in PBS buffer with 2% sucrose. For longer periods of storage, store at 20°C. Avoid repeat freeze-thaw cycles.

Precautions

TFB1M antibody - N-terminal region is for research use only and not for use in diagnostic or therapeutic procedures.

TFB1M antibody - N-terminal region - Protein Information**Name** TFB1M**Function**

S-adenosyl-L-methionine-dependent methyltransferase which specifically dimethylates mitochondrial 12S rRNA at the conserved stem loop. Also required for basal transcription of mitochondrial DNA, probably via its interaction with POLRMT and TFAM. Stimulates transcription independently of the methyltransferase activity.

Cellular Location

Mitochondrion.

Tissue Location

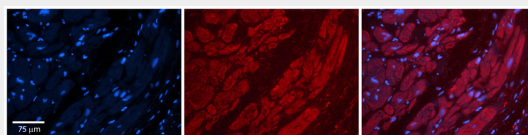
Ubiquitously expressed.

TFB1M antibody - N-terminal region - Protocols

Provided below are standard protocols that you may find useful for product applications.

- [Western Blot](#)
- [Blocking Peptides](#)
- [Dot Blot](#)
- [Immunohistochemistry](#)
- [Immunofluorescence](#)
- [Immunoprecipitation](#)
- [Flow Cytometry](#)
- [Cell Culture](#)

TFB1M antibody - N-terminal region - Images



Rabbit Anti-TFB1M Antibody

Catalog Number: AI10684

Formalin Fixed Paraffin Embedded Tissue: Human Adult heart Observed Staining: Cytoplasmic

Primary Antibody

Concentration: 1:600

Secondary Antibody: Donkey anti-Rabbit-Cy2/3

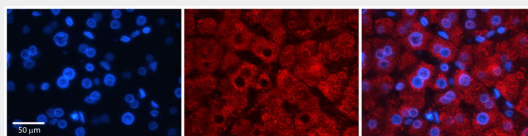
Secondary Antibody

Concentration: 1:200

Magnification: 20X

Exposure Time: 0.5 – 2.0 sec

Protocol located in Reviews and Data.



Rabbit Anti-TFB1M Antibody

Catalog Number: AI10684

Formalin Fixed Paraffin Embedded Tissue: Human Adult liver Observed Staining: Cytoplasmic

Primary Antibody

Concentration: 1:100

Secondary Antibody: Donkey anti-Rabbit-Cy2/3

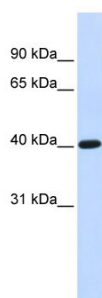
Secondary Antibody

Concentration: 1:200

Magnification: 20X

Exposure Time: 0.5 – 2.0 sec

Protocol located in Reviews and Data.



WB Suggested Anti-TFB1M Antibody Titration: 0.2-1 µg/ml

ELISA Titer: 1:312500

Positive Control: Human Liver

TFB1M antibody - N-terminal region - References

Cotney, J., (2007) Nucleic Acids Res. 35 (12), 4042-4054 Reconstitution and Storage: For short term use, store at 2-8°C up to 1 week. For long term storage, store at -20°C in small aliquots to prevent freeze-thaw cycles.