

PRDM11 antibody - middle region
Rabbit Polyclonal Antibody
Catalog # AI10696**Specification**

PRDM11 antibody - middle region - Product Information

Application	WB
Primary Accession	O9NOV5
Other Accession	NM_020229 , NP_064614
Reactivity	Human, Mouse, Rat, Rabbit, Pig, Horse, Bovine, Dog
Predicted Host	Mouse, Rabbit, Pig, Dog
Clonality	Rabbit
Calculated MW	Polyclonal 58kDa KDa

PRDM11 antibody - middle region - Additional Information**Gene ID** 56981

Alias Symbol	PFM8
Other Names	
PR domain-containing protein 11, 2.1.1.-, PRDM11, PFM8	

Format

Liquid. Purified antibody supplied in 1x PBS buffer with 0.09% (w/v) sodium azide and 2% sucrose.

Reconstitution & Storage

Add 50 ul of distilled water. Final anti-PRDM11 antibody concentration is 1 mg/ml in PBS buffer with 2% sucrose. For longer periods of storage, store at 20°C. Avoid repeat freeze-thaw cycles.

Precautions

PRDM11 antibody - middle region is for research use only and not for use in diagnostic or therapeutic procedures.

PRDM11 antibody - middle region - Protein Information**Name** PRDM11**Synonyms** PFM8**Function**

May be involved in transcription regulation.

Cellular Location

Nucleus. Cytoplasm

Tissue Location

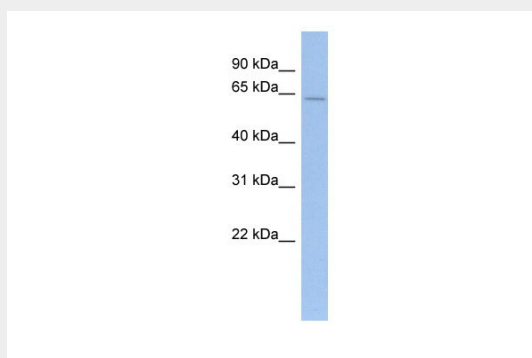
Highly expressed in lung, including bronchial epithelial cells and airway smooth muscle cells, as well as in peripheral blood mononuclear cells. In tonsils, expressed in B-cell types, including naive B-cells, centroblasts, centrocytes and memory B- cells (at protein level). In benign hyperplastic lymph nodes, expressed in germinal center cells in both the dark and light zones, as well as in scattered cells in the mantle zone and the interfollicular area (at protein level).

PRDM11 antibody - middle region - Protocols

Provided below are standard protocols that you may find useful for product applications.

- [Western Blot](#)
- [Blocking Peptides](#)
- [Dot Blot](#)
- [Immunohistochemistry](#)
- [Immunofluorescence](#)
- [Immunoprecipitation](#)
- [Flow Cytometry](#)
- [Cell Culture](#)

PRDM11 antibody - middle region - Images



WB Suggested Anti-PRDM11 Antibody Titration: 0.2-1 µg/ml

ELISA Titer: 1:1562500

Positive Control: Human Spleen

PRDM11 antibody - middle region - References

Xiao,B., (2003) Curr. Opin. Struct. Biol. 13 (6), 699-705 Reconstitution and Storage:For short term use, store at 2-8C up to 1 week. For long term storage, store at -20C in small aliquots to prevent freeze-thaw cycles.