

PSIP1 antibody - middle region
Rabbit Polyclonal Antibody
Catalog # AI10702**Specification**

PSIP1 antibody - middle region - Product Information

Application	IHC, WB
Primary Accession	O75475
Other Accession	NM_033222 , NP_150091
Reactivity	Human, Mouse, Rat, Rabbit, Sheep, Horse, Bovine, Dog
Predicted	Human, Mouse, Rat, Rabbit, Pig, Chicken, Sheep, Horse, Bovine, Dog
Host	Rabbit
Clonality	Polyclonal
Calculated MW	60kDa KDa

PSIP1 antibody - middle region - Additional Information**Gene ID** 11168**Alias Symbol** p52, p75, PAIP, DFS70, LEDGF, PSIP2**Other Names**

PC4 and SFRS1-interacting protein, CLL-associated antigen KW-7, Dense fine speckles 70 kDa protein, DFS 70, Lens epithelium-derived growth factor, Transcriptional coactivator p75/p52, PSIP1, DFS70, LEDGF, PSIP2

Format

Liquid. Purified antibody supplied in 1x PBS buffer with 0.09% (w/v) sodium azide and 2% sucrose.

Reconstitution & Storage

Add 100 ul of distilled water. Final anti-PSIP1 antibody concentration is 1 mg/ml in PBS buffer with 2% sucrose. For longer periods of storage, store at 20°C. Avoid repeat freeze-thaw cycles.

Precautions

PSIP1 antibody - middle region is for research use only and not for use in diagnostic or therapeutic procedures.

PSIP1 antibody - middle region - Protein Information**Name** PSIP1**Synonyms** DFS70, LEDGF, PSIP2**Function**

Transcriptional coactivator involved in neuroepithelial stem cell differentiation and neurogenesis. Involved in particular in lens epithelial cell gene regulation and stress responses. May play an important role in lens epithelial to fiber cell terminal differentiation. May play a protective role

during stress-induced apoptosis. Isoform 2 is a more general and stronger transcriptional coactivator. Isoform 2 may also act as an adapter to coordinate pre- mRNA splicing. Cellular cofactor for lentiviral integration.

Cellular Location

Nucleus. Note=Remains chromatin-associated throughout the cell cycle

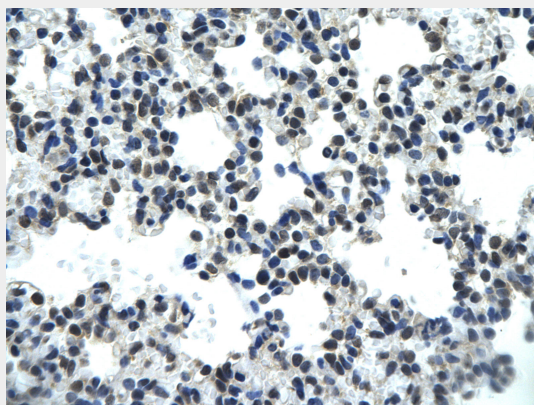
Tissue Location

Widely expressed. Expressed at high level in the thymus. Expressed in fetal and adult brain. Expressed in neurons, but not astrocytes. Markedly elevated in fetal as compared to adult brain. In the adult brain, expressed in the subventricular zone (SVZ), in hippocampus, and undetectable elsewhere. In the fetal brain, expressed in the germinal neuroepithelium and cortical plate regions

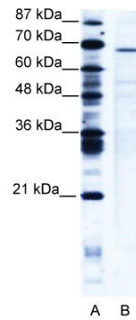
PSIP1 antibody - middle region - Protocols

Provided below are standard protocols that you may find useful for product applications.

- [Western Blot](#)
- [Blocking Peptides](#)
- [Dot Blot](#)
- [Immunohistochemistry](#)
- [Immunofluorescence](#)
- [Immunoprecipitation](#)
- [Flow Cytometry](#)
- [Cell Culture](#)

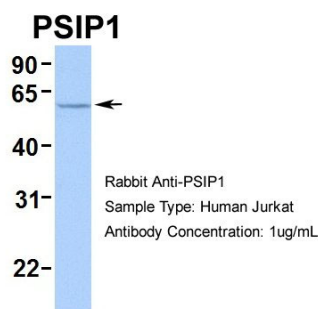
PSIP1 antibody - middle region - Images

Rabbit Anti-PSIP1 antibody
Catalog Number: AI10702
Paraffin Embedded Tissue: Human Lung cell
Cellular Data: Epithelial cells of renal tubule
Antibody Concentration: 4.0-8.0 µg/ml
Magnification: 400X



WB Suggested Anti-PSIP1 Antibody Titration: 5 µg/ml

Positive Control: Jurkat Whole Cell PSIP1 is strongly supported by BioGPS gene expression data to be expressed in Human Jurkat cells



Human Jurkat

PSIP1 antibody - middle region - References

Vandegraaff, N., et al., (2006) Virology 346 (2), 415-426
Reconstitution and Storage: For short term use, store at 2-8°C up to 1 week. For long term storage, store at -20°C in small aliquots to prevent freeze-thaw cycles.