

Kcnh2 antibody - C-terminal region
Rabbit Polyclonal Antibody
Catalog # AI10762**Specification**

Kcnh2 antibody - C-terminal region - Product Information

Application	WB
Primary Accession	O35219
Other Accession	NM_013569 , NP_038597
Reactivity	Human, Mouse, Rat, Rabbit, Pig, Horse, Bovine, Dog
Predicted	Human, Mouse, Rat, Rabbit, Pig, Horse, Bovine, Dog
Host	Rabbit
Clonality	Polyclonal
Calculated MW	127kDa KDa

Kcnh2 antibody - C-terminal region - Additional Information**Gene ID** 16511**Alias Symbol** AI326795, ERG1, LQT, Lqt2, M-erg, Merg1, merg1a, merg1b**Other Names**

Potassium voltage-gated channel subfamily H member 2, Ether-a-go-go-related gene potassium channel 1, ERG-1, Eag-related protein 1, Ether-a-go-go-related protein 1, MERG, Voltage-gated potassium channel subunit Kv11.1, Kcnh2, Erg, Merg1

Format

Liquid. Purified antibody supplied in 1x PBS buffer with 0.09% (w/v) sodium azide and 2% sucrose.

Reconstitution & Storage

Add 50 ul of distilled water. Final anti-Kcnh2 antibody concentration is 1 mg/ml in PBS buffer with 2% sucrose. For longer periods of storage, store at 20°C. Avoid repeat freeze-thaw cycles.

Precautions

Kcnh2 antibody - C-terminal region is for research use only and not for use in diagnostic or therapeutic procedures.

Kcnh2 antibody - C-terminal region - Protein Information**Name** Kcnh2**Synonyms** Erg, Merg1**Function**

Pore-forming (alpha) subunit of voltage-gated inwardly rectifying potassium channel. Channel properties are modulated by cAMP and subunit assembly. Mediates the rapidly activating

component of the delayed rectifying potassium current in heart (IKr) (By similarity).

Cellular Location

Cell membrane {ECO:0000250|UniProtKB:Q12809}; Multi-pass membrane protein

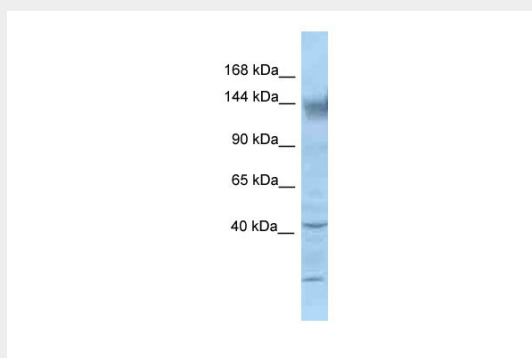
Tissue Location

Isoform 1 is expressed in heart, brain and testis and at low levels in lung. Isoform 3 is expressed predominantly in heart. The expression of isoform 2 is low in all tissues tested

Kcnh2 antibody - C-terminal region - Protocols

Provided below are standard protocols that you may find useful for product applications.

- [Western Blot](#)
- [Blocking Peptides](#)
- [Dot Blot](#)
- [Immunohistochemistry](#)
- [Immunofluorescence](#)
- [Immunoprecipitation](#)
- [Flow Cytometry](#)
- [Cell Culture](#)

Kcnh2 antibody - C-terminal region - Images

WB Suggested Anti-Kcnh2 Antibody Titration: 1.0 µg/ml
Positive Control: Mouse Kidney