

**CLIC2 antibody - C-terminal region**  
**Rabbit Polyclonal Antibody**  
**Catalog # AI10779****Specification**

---

**CLIC2 antibody - C-terminal region - Product Information**

Application	WB
Primary Accession	<a href="#">O15247</a>
Other Accession	<a href="#">NM_001289</a> , <a href="#">NP_001280</a>
Reactivity	Human, Mouse, Rat, Rabbit, Pig, Horse, Bovine, Dog
Predicted	Human, Rat, Rabbit, Pig, Chicken, Bovine, Dog
Host	Rabbit
Clonality	Polyclonal
Calculated MW	27kDa KDa

**CLIC2 antibody - C-terminal region - Additional Information****Gene ID** 1193

Alias Symbol	CLIC2b, XAP121
<b>Other Names</b>	
Chloride intracellular channel protein 2, XAP121, CLIC2	

**Format**

Liquid. Purified antibody supplied in 1x PBS buffer with 0.09% (w/v) sodium azide and 2% sucrose.

**Reconstitution & Storage**

Add 100 ul of distilled water. Final anti-CLIC2 antibody concentration is 1 mg/ml in PBS buffer with 2% sucrose. For longer periods of storage, store at 20°C. Avoid repeat freeze-thaw cycles.

**Precautions**

CLIC2 antibody - C-terminal region is for research use only and not for use in diagnostic or therapeutic procedures.

**CLIC2 antibody - C-terminal region - Protein Information****Name** CLIC2**Function**

Can insert into membranes and form chloride ion channels. Channel activity depends on the pH. Membrane insertion seems to be redox-regulated and may occur only under oxydizing conditions. Modulates the activity of RYR2 and inhibits calcium influx.

**Cellular Location**

Cytoplasm. Membrane; Single-pass membrane protein. Note=Exists both as soluble cytoplasmic protein and as membrane protein with probably a single transmembrane domain

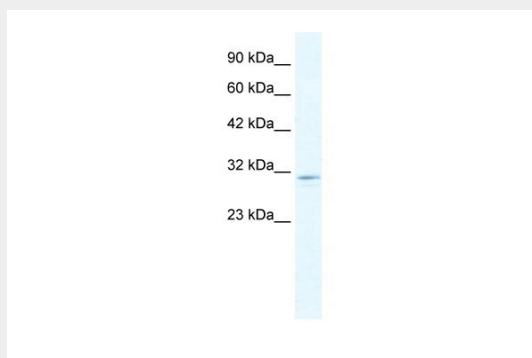
**Tissue Location**

Expressed in adult and fetal brain, heart, skeletal muscle, liver, lung, and spleen. Detected in adult stomach and testis Expressed in fetal thymus and kidney.

**CLIC2 antibody - C-terminal region - Protocols**

Provided below are standard protocols that you may find useful for product applications.

- [Western Blot](#)
- [Blocking Peptides](#)
- [Dot Blot](#)
- [Immunohistochemistry](#)
- [Immunofluorescence](#)
- [Immunoprecipitation](#)
- [Flow Cytometry](#)
- [Cell Culture](#)

**CLIC2 antibody - C-terminal region - Images**

WB Suggested Anti-CLIC2 Antibody Titration: 1.25 $\mu$ g/ml

ELISA Titer: 1:312500

Positive Control: HepG2 cell lysate

**CLIC2 antibody - C-terminal region - References**

Fan, L., et al., (2003) FEBS Lett. 540 (1-3), 77-80  
Reconstitution and Storage: For short term use, store at 2-8C up to 1 week. For long term storage, store at -20C in small aliquots to prevent freeze-thaw cycles.