

Kcnq3 antibody - middle region
Rabbit Polyclonal Antibody
Catalog # AI10796**Specification**

Kcnq3 antibody - middle region - Product Information

Application	WB
Primary Accession	Q8K3F6
Other Accession	NM_152923 , NP_690887
Reactivity	Human, Mouse, Rat, Rabbit, Pig, Horse, Bovine, Dog
Predicted Host	Human, Mouse, Rabbit, Pig, Bovine, Dog
Clonality	Rabbit
Calculated MW	Polyclonal 97kDa KDa

Kcnq3 antibody - middle region - Additional Information**Gene ID** 110862**Other Names**

Potassium voltage-gated channel subfamily KQT member 3, KQT-like 3, Potassium channel subunit alpha KvLQT3, Voltage-gated potassium channel subunit Kv7.3, Kcnq3

Format

Liquid. Purified antibody supplied in 1x PBS buffer with 0.09% (w/v) sodium azide and 2% sucrose.

Reconstitution & Storage

Add 50 ul of distilled water. Final anti-Kcnq3 antibody concentration is 1 mg/ml in PBS buffer with 2% sucrose. For longer periods of storage, store at 20°C. Avoid repeat freeze-thaw cycles.

Precautions

Kcnq3 antibody - middle region is for research use only and not for use in diagnostic or therapeutic procedures.

Kcnq3 antibody - middle region - Protein Information**Name** Kcnq3 {ECO:0000312|MGI:MGI:1336181}**Function**

Associates with KCNQ2 or KCNQ5 to form a potassium channel with essentially identical properties to the channel underlying the native M-current, a slowly activating and deactivating potassium conductance which plays a critical role in determining the subthreshold electrical excitability of neurons as well as the responsiveness to synaptic inputs. Therefore, it is important in the regulation of neuronal excitability. KCNQ2-KCNQ3 channel is selectively permeable to other cations besides potassium, in decreasing order of affinity K(+) > Rb(+) > Cs(+) > Na(+). Associates with Na(+)-coupled myo-inositol symporter SLC5A3 forming a coregulatory complex that alters ion selectivity, increasing Na(+) and Cs(+) permeation relative to K(+) permeation.

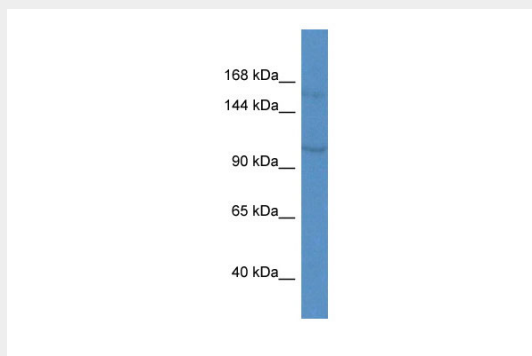
Cellular Location

Cell membrane {ECO:0000250|UniProtKB:O43525}; Multi-pass membrane protein

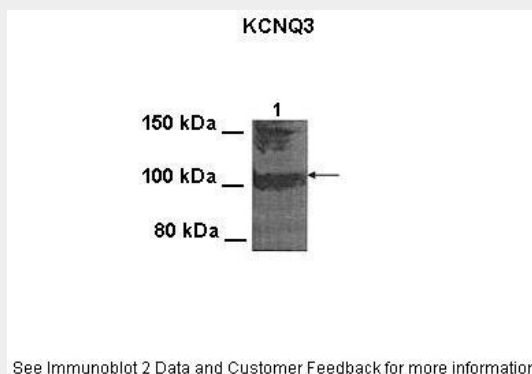
Kcnq3 antibody - middle region - Protocols

Provided below are standard protocols that you may find useful for product applications.

- [Western Blot](#)
- [Blocking Peptides](#)
- [Dot Blot](#)
- [Immunohistochemistry](#)
- [Immunofluorescence](#)
- [Immunoprecipitation](#)
- [Flow Cytometry](#)
- [Cell Culture](#)

Kcnq3 antibody - middle region - Images

WB Suggested Anti-Kcnq3 Antibody Titration: 1.0 µg/ml
Positive Control: Mouse Heart



Lanes: 100 ug CHO cell lysate

Primary Antibody Dilution: 1:1000
Secondary Antibody: Goat anti-rabbit HRP
Secondary Antibody Dilution: 1:25000
Gene Name: Kcnq3
Submitted by: Anonymous