

KCNA10 antibody - middle region
Rabbit Polyclonal Antibody
Catalog # AI10799**Specification**

KCNA10 antibody - middle region - Product Information

Application	IHC, WB
Primary Accession	Q16322
Other Accession	NM_005549 , NP_005540
Reactivity	Human, Mouse, Rat, Bovine, Dog
Predicted	Mouse, Rat, Bovine
Host	Rabbit
Clonality	Polyclonal
Calculated MW	56kDa KDa

KCNA10 antibody - middle region - Additional Information**Gene ID** 3744**Alias Symbol** Kcn1, Kv1.8**Other Names**

Potassium voltage-gated channel subfamily A member 10, Voltage-gated potassium channel subunit Kv1.8, KCNA10

Format

Liquid. Purified antibody supplied in 1x PBS buffer with 0.09% (w/v) sodium azide and 2% sucrose.

Reconstitution & Storage

Add 100 ul of distilled water. Final anti-KCNA10 antibody concentration is 1 mg/ml in PBS buffer with 2% sucrose. For longer periods of storage, store at 20°C. Avoid repeat freeze-thaw cycles.

Precautions

KCNA10 antibody - middle region is for research use only and not for use in diagnostic or therapeutic procedures.

KCNA10 antibody - middle region - Protein Information**Name** KCNA10**Function**

Mediates voltage-dependent potassium ion permeability of excitable membranes. Assuming opened or closed conformations in response to the voltage difference across the membrane, the protein forms a potassium-selective channel through which potassium ions may pass in accordance with their electrochemical gradient. The channel activity is up-regulated by cAMP.

Cellular Location

Membrane; Multi-pass membrane protein

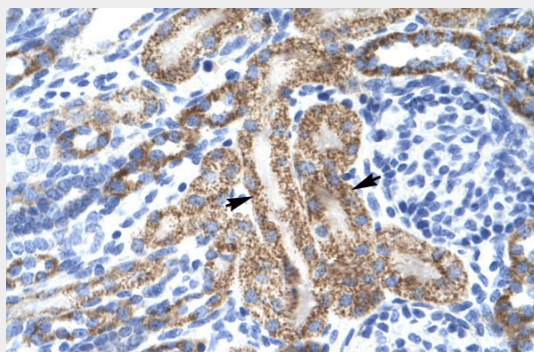
Tissue Location

Detected in kidney, in proximal tubules, glomerular endothelium, in vascular endothelium and in smooth muscle cells

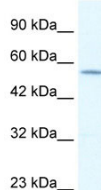
KCNA10 antibody - middle region - Protocols

Provided below are standard protocols that you may find useful for product applications.

- [Western Blot](#)
- [Blocking Peptides](#)
- [Dot Blot](#)
- [Immunohistochemistry](#)
- [Immunofluorescence](#)
- [Immunoprecipitation](#)
- [Flow Cytometry](#)
- [Cell Culture](#)

KCNA10 antibody - middle region - Images

Human kidney



WB Suggested Anti-KCNA10 Antibody Titration: 1.25µg/ml

ELISA Titer: 1:312500

Positive Control: Jurkat cell lysate

KCNA10 antibody - middle region - References

Yao, X., et al., (2002) J. Am. Soc. Nephrol. 13 (12), 2831-2839
Reconstitution and Storage: For short term use, store at 2-8°C up to 1 week. For long term storage, store at -20°C in small aliquots to prevent freeze-thaw cycles.