

**CLCA2 antibody - C-terminal region**  
**Rabbit Polyclonal Antibody**  
**Catalog # AI10801****Specification**

---

**CLCA2 antibody - C-terminal region - Product Information**

Application	WB
Primary Accession	<a href="#">O9UQC9</a>
Other Accession	<a href="#">NM_006536</a> , <a href="#">NP_006527</a>
Reactivity	Human, Mouse, Rat, Rabbit, Pig, Horse, Bovine, Dog
Predicted Host	Human, Rabbit, Pig, Horse, Bovine, Dog
Clonality	Rabbit
Calculated MW	Polyclonal 104kDa KDa

**CLCA2 antibody - C-terminal region - Additional Information****Gene ID 9635**

Alias Symbol **CACC, CACC3, CLCRG2, CaCC-3, FLJ97885**

**Other Names**

Calcium-activated chloride channel regulator 2, 3.4.-.-, Calcium-activated chloride channel family member 2, hCLCA2, Calcium-activated chloride channel protein 3, CaCC-3, hCaCC-3, Calcium-activated chloride channel regulator 2, 109 kDa form, Calcium-activated chloride channel regulator 2, 35 kDa form, CLCA2, CACC3

**Format**

Liquid. Purified antibody supplied in 1x PBS buffer with 0.09% (w/v) sodium azide and 2% sucrose.

**Reconstitution & Storage**

Add 50 ul of distilled water. Final anti-CLCA2 antibody concentration is 1 mg/ml in PBS buffer with 2% sucrose. For longer periods of storage, store at 20°C. Avoid repeat freeze-thaw cycles.

**Precautions**

CLCA2 antibody - C-terminal region is for research use only and not for use in diagnostic or therapeutic procedures.

**CLCA2 antibody - C-terminal region - Protein Information**

**Name** CLCA2

**Synonyms** CACC3

**Function**

Plays a role in modulating chloride current across the plasma membrane in a calcium-dependent manner, and cell adhesion. Involved in basal cell adhesion and/or stratification of squamous epithelia. May act as a tumor suppressor in breast and colorectal cancer. Plays a key role for cell

adhesion in the beginning stages of lung metastasis via the binding to ITGB4.

#### **Cellular Location**

Cell membrane; Single-pass type I membrane protein. Basal cell membrane; Single-pass type I membrane protein. Cell junction

#### **Tissue Location**

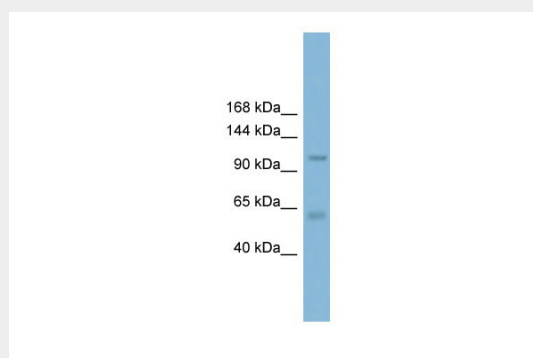
Expressed in cornea, skin, vagina, esophagus, and larynx (at protein level). Expressed in trachea and mammary gland Weakly expressed in testis and kidney. Highly expressed in corneal epithelium, colon and trachea. Moderately expressed in brain, urogenital organs, bladder, uterus and prostate. Highly expressed in tissues containing stratified epithelium including cornea, esophagus, larynx, skin and vagina than those tissues which contain only epithelial monolayers. Expressed in normal breast epithelium but not in breast cancer. Highly expressed during epithelial stratification Expressed in endothelial cells of lung. Expressed selectively in endothelia of small pulmonary arteries, arterioles, and subpleural and interlobular venules.

#### **CLCA2 antibody - C-terminal region - Protocols**

Provided below are standard protocols that you may find useful for product applications.

- [Western Blot](#)
- [Blocking Peptides](#)
- [Dot Blot](#)
- [Immunohistochemistry](#)
- [Immunofluorescence](#)
- [Immunoprecipitation](#)
- [Flow Cytometry](#)
- [Cell Culture](#)

#### **CLCA2 antibody - C-terminal region - Images**



WB Suggested Anti-CLCA2 Antibody Titration: 0.2-1 µg/ml

ELISA Titer: 1:312500

Positive Control: THP-1 cell lysate