

**KCNG1 antibody - N-terminal region**  
**Rabbit Polyclonal Antibody**  
**Catalog # AI10843****Specification**

---

**KCNG1 antibody - N-terminal region - Product Information**

Application	WB
Primary Accession	<a href="#">O9UIX4</a>
Other Accession	<a href="#">NM_002237</a> , <a href="#">NP_002228</a>
Reactivity	Human, Mouse, Rat, Rabbit, Pig, Horse, Bovine, Dog
Predicted Host	Mouse, Rat, Pig, Chicken, Horse, Dog
Clonality	Rabbit
Calculated MW	Polyclonal 58kDa KDa

**KCNG1 antibody - N-terminal region - Additional Information****Gene ID** 3755**Alias Symbol** **K13, KCNG, KV6.1, MGC12878, kH2****Other Names**

Potassium voltage-gated channel subfamily G member 1, Voltage-gated potassium channel subunit Kv6.1, kH2, KCNG1

**Format**

Liquid. Purified antibody supplied in 1x PBS buffer with 0.09% (w/v) sodium azide and 2% sucrose.

**Reconstitution & Storage**

Add 50 ul of distilled water. Final anti-KCNG1 antibody concentration is 1 mg/ml in PBS buffer with 2% sucrose. For longer periods of storage, store at 20°C. Avoid repeat freeze-thaw cycles.

**Precautions**

KCNG1 antibody - N-terminal region is for research use only and not for use in diagnostic or therapeutic procedures.

**KCNG1 antibody - N-terminal region - Protein Information****Name** KCNG1**Function**

Potassium channel subunit that does not form functional channels by itself. Can form functional heterotetrameric channels with KCNB1; modulates the delayed rectifier voltage-gated potassium channel activation and deactivation rates of KCNB1 (PubMed:&lt;a href="http://www.uniprot.org/citations/19074135" target="\_blank"&gt;19074135&lt;/a&gt;).

**Cellular Location**

Cell membrane; Multi-pass membrane protein. Note=Colocalizes with KCNB1 at the plasma

membrane (PubMed:19074135)

#### **Tissue Location**

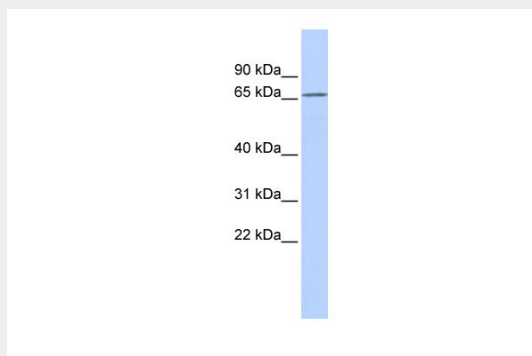
Expressed in brain and placenta, and at much lower levels in kidney and pancreas  
(PubMed:9434767)

#### **KCNG1 antibody - N-terminal region - Protocols**

Provided below are standard protocols that you may find useful for product applications.

- [Western Blot](#)
- [Blocking Peptides](#)
- [Dot Blot](#)
- [Immunohistochemistry](#)
- [Immunofluorescence](#)
- [Immunoprecipitation](#)
- [Flow Cytometry](#)
- [Cell Culture](#)

#### **KCNG1 antibody - N-terminal region - Images**



WB Suggested Anti-KCNG1 Antibody Titration: 0.2-1 µg/ml

ELISA Titer: 1:62500

Positive Control: MCF7 cell lysate

#### **KCNG1 antibody - N-terminal region - References**

Gutman, G.A., (2005) Pharmacol. Rev. 57 (4), 473-508 Reconstitution and Storage: For short term use, store at 2-8°C up to 1 week. For long term storage, store at -20°C in small aliquots to prevent freeze-thaw cycles.