

**KCNG4 antibody - N-terminal region**  
**Rabbit Polyclonal Antibody**  
**Catalog # AI10845****Specification**

---

**KCNG4 antibody - N-terminal region - Product Information**

Application	WB
Primary Accession	<a href="#">Q8TDN1</a>
Other Accession	<a href="#">NM_172347</a> , <a href="#">NP_758857</a>
Reactivity	Human
Predicted	Human
Host	Rabbit
Clonality	Polyclonal
Calculated MW	59kDa KDa

**KCNG4 antibody - N-terminal region - Additional Information****Gene ID** 93107**Alias Symbol** KV6.3, KV6.4, MGC129609, MGC4558**Other Names**

Potassium voltage-gated channel subfamily G member 4, Voltage-gated potassium channel subunit Kv6.4, KCNG4, KCNG3

**Format**

Liquid. Purified antibody supplied in 1x PBS buffer with 0.09% (w/v) sodium azide and 2% sucrose.

**Reconstitution & Storage**

Add 50 ul of distilled water. Final anti-KCNG4 antibody concentration is 1 mg/ml in PBS buffer with 2% sucrose. For longer periods of storage, store at 20°C. Avoid repeat freeze-thaw cycles.

**Precautions**

KCNG4 antibody - N-terminal region is for research use only and not for use in diagnostic or therapeutic procedures.

**KCNG4 antibody - N-terminal region - Protein Information****Name** KCNG4**Synonyms** KCNG3**Function**

Potassium channel subunit that does not form functional channels by itself. Can form functional heterotetrameric channels with KCNB1; modulates the delayed rectifier voltage-gated potassium channel activation and deactivation rates of KCNB1 (PubMed:&lt;a href="http://www.uniprot.org/citations/19074135" target="\_blank"&gt;19074135&lt;/a&gt;).

**Cellular Location**

Cell membrane; Multi-pass membrane protein. Note=Has to be associated with KCNB1 or possibly another partner to get inserted in the plasma membrane. Colocalizes with KCNB1 at the plasma membrane. Remains intracellular in the absence of KCNB1 (PubMed:19074135)

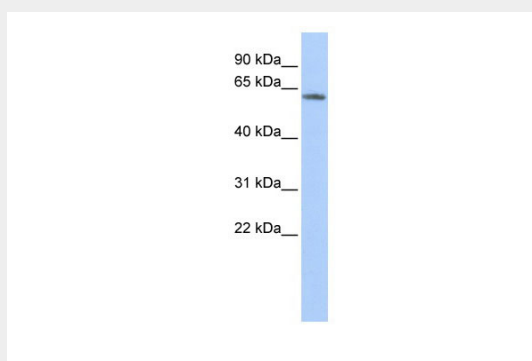
**Tissue Location**

Highly expressed in brain, and at lower levels in liver, small intestine and colon

**KCNG4 antibody - N-terminal region - Protocols**

Provided below are standard protocols that you may find useful for product applications.

- [Western Blot](#)
- [Blocking Peptides](#)
- [Dot Blot](#)
- [Immunohistochemistry](#)
- [Immunofluorescence](#)
- [Immunoprecipitation](#)
- [Flow Cytometry](#)
- [Cell Culture](#)

**KCNG4 antibody - N-terminal region - Images**

WB Suggested Anti-KCNG4 Antibody Titration: 0.2-1 µg/ml

ELISA Titer: 1:62500

Positive Control: 721\_B cell lysate

**KCNG4 antibody - N-terminal region - References**

Gutman, G.A., (2005) Pharmacol. Rev. 57 (4), 473-508 Reconstitution and Storage: For short term use, store at 2-8°C up to 1 week. For long term storage, store at -20°C in small aliquots to prevent freeze-thaw cycles.