

FOXJ1 antibody - middle region
Rabbit Polyclonal Antibody
Catalog # AI10859**Specification****FOXJ1 antibody - middle region - Product Information**

Application	WB
Primary Accession	O92949
Other Accession	NM_001454 , NP_001445
Reactivity	Human, Mouse, Rat, Rabbit, Pig, Horse, Bovine, Dog
Predicted Host	Human, Mouse, Rat, Rabbit, Horse, Bovine
Clonality	Rabbit
Calculated MW	Polyclonal 45kDa KDa

FOXJ1 antibody - middle region - Additional Information**Gene ID 2302**

Alias Symbol **FKHL13, HFH-4, HFH4, MGC35202**

Other Names

Forkhead box protein J1, Forkhead-related protein FKHL13, Hepatocyte nuclear factor 3 forkhead homolog 4, HFH-4, FOXJ1, FKHL13, HFH4

Format

Liquid. Purified antibody supplied in 1x PBS buffer with 0.09% (w/v) sodium azide and 2% sucrose.

Reconstitution & Storage

Add 50 ul of distilled water. Final anti-FOXJ1 antibody concentration is 1 mg/ml in PBS buffer with 2% sucrose. For longer periods of storage, store at 20°C. Avoid repeat freeze-thaw cycles.

Precautions

FOXJ1 antibody - middle region is for research use only and not for use in diagnostic or therapeutic procedures.

FOXJ1 antibody - middle region - Protein Information

Name FOXJ1 ([HGNC:3816](#))

Function

Transcription factor specifically required for the formation of motile cilia (PubMed:31630787). Acts by activating transcription of genes that mediate assembly of motile cilia, such as CFAP157. Binds the DNA consensus sequences 5'-HWDTGTTTGTTA-3' or 5'-KTTTGTTGTTKTW-3' (where H is not G, W is A or T, D is not C, and K is G or T). Activates the transcription of a variety of ciliary proteins in the developing brain and lung.

Cellular Location

Nucleus {ECO:0000250|UniProtKB:Q61660}.

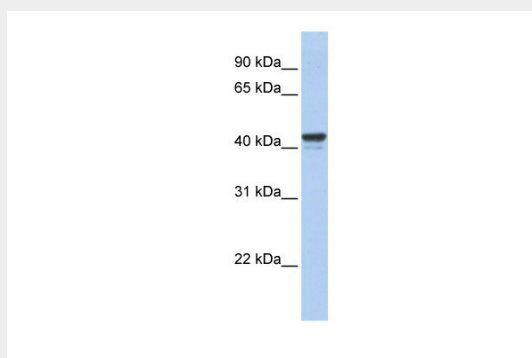
Tissue Location

Testis, oviduct, lung and brain cortex.

FOXJ1 antibody - middle region - Protocols

Provided below are standard protocols that you may find useful for product applications.

- [Western Blot](#)
- [Blocking Peptides](#)
- [Dot Blot](#)
- [Immunohistochemistry](#)
- [Immunofluorescence](#)
- [Immunoprecipitation](#)
- [Flow Cytometry](#)
- [Cell Culture](#)

FOXJ1 antibody - middle region - Images

WB Suggested Anti-FOXJ1 Antibody Titration: 0.2-1 μ g/ml

ELISA Titer: 1:62500

Positive Control: MCF7 cell lysate

FOXJ1 antibody - middle region - References

Li, C.S., (2007) Exp. Mol. Med. 39 (6), 805-811 Reconstitution and Storage: For short term use, store at 2-8°C up to 1 week. For long term storage, store at -20°C in small aliquots to prevent freeze-thaw cycles.