

**ZNF238 antibody - N-terminal region**  
**Rabbit Polyclonal Antibody**  
**Catalog # AI10884****Specification**

---

**ZNF238 antibody - N-terminal region - Product Information**

Application	WB
Primary Accession	<a href="#">O99592</a>
Other Accession	<a href="#">NM_006352</a> , <a href="#">NP_006343</a>
Reactivity	Human, Mouse, Rat, Rabbit, Zebrafish, Horse, Bovine, Dog
Predicted	Rabbit, Chicken
Host	Rabbit
Clonality	Polyclonal
Calculated MW	58kDa KDa

**ZNF238 antibody - N-terminal region - Additional Information****Gene ID** 10472**Alias Symbol** C2H2-171, RP58, TAZ-1, ZBTB18, ZNF238**Other Names**

Zinc finger and BTB domain-containing protein 18, 58 kDa repressor protein, Transcriptional repressor RP58, Translin-associated zinc finger protein 1, TAZ-1, Zinc finger protein 238, Zinc finger protein C2H2-171, ZBTB18, RP58, TAZ1, ZNF238

**Format**

Liquid. Purified antibody supplied in 1x PBS buffer with 0.09% (w/v) sodium azide and 2% sucrose.

**Reconstitution & Storage**

Add 50 ul of distilled water. Final anti-ZNF238 antibody concentration is 1 mg/ml in PBS buffer with 2% sucrose. For longer periods of storage, store at 20°C. Avoid repeat freeze-thaw cycles.

**Precautions**

ZNF238 antibody - N-terminal region is for research use only and not for use in diagnostic or therapeutic procedures.

**ZNF238 antibody - N-terminal region - Protein Information****Name** ZBTB18**Synonyms** RP58, TAZ1, ZNF238**Function**

Transcriptional repressor that plays a role in various developmental processes such as myogenesis and brain development. Plays a key role in myogenesis by directly repressing the expression of ID2 and ID3, 2 inhibitors of skeletal myogenesis. Also involved in controlling cell division of progenitor cells and regulating the survival of postmitotic cortical neurons. Specifically binds the

consensus DNA sequence 5'-[AC]ACATCTG[GT][AC]-3' which contains the E box core, and acts by recruiting chromatin remodeling multiprotein complexes. May also play a role in the organization of chromosomes in the nucleus.

**Cellular Location**

Nucleus. Note=Associates with condensed chromatin

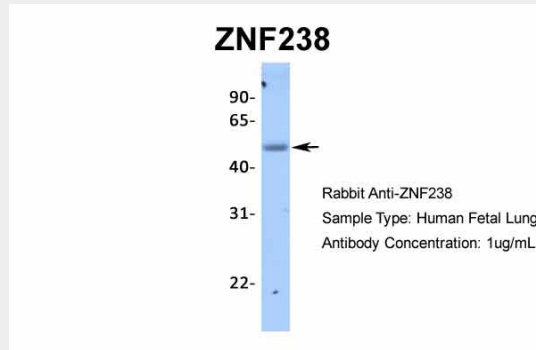
**Tissue Location**

Lymphoid tissues, testis, heart, brain, skeletal muscle, and pancreas and, at much lower level, other tissues

**ZNF238 antibody - N-terminal region - Protocols**

Provided below are standard protocols that you may find useful for product applications.

- [Western Blot](#)
- [Blocking Peptides](#)
- [Dot Blot](#)
- [Immunohistochemistry](#)
- [Immunofluorescence](#)
- [Immunoprecipitation](#)
- [Flow Cytometry](#)
- [Cell Culture](#)

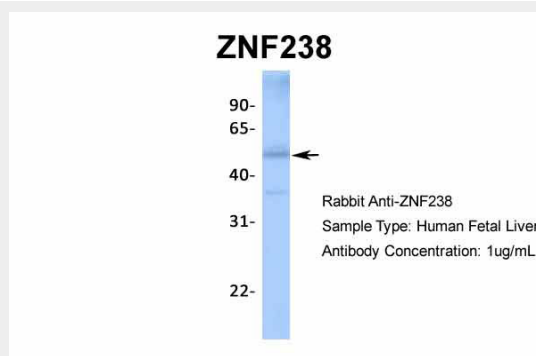
**ZNF238 antibody - N-terminal region - Images**

Host: Rabbit

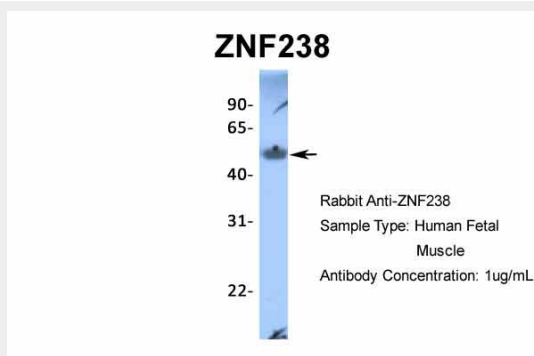
Target Name: ZNF238

Sample Tissue: Human Fetal Lung

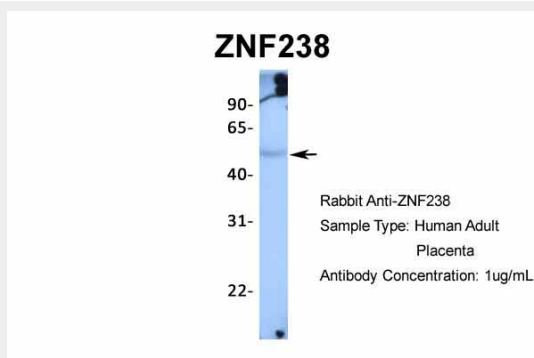
Antibody Dilution: 1.0µg/ml



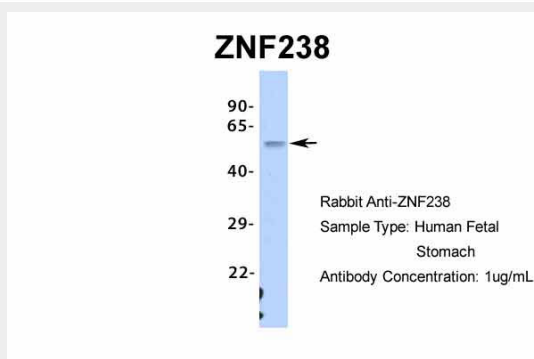
Host: Rabbit  
Target Name: ZNF238  
Sample Tissue: Human Fetal Liver  
Antibody Dilution: 1.0µg/ml



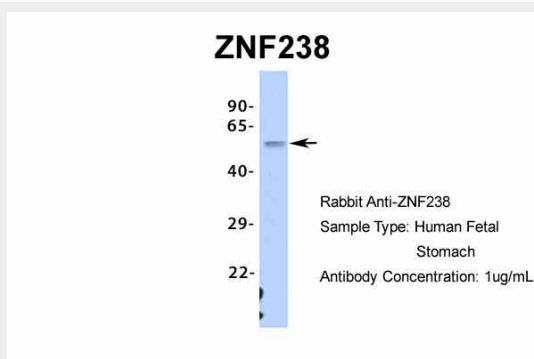
Host: Rabbit  
Target Name: ZNF238  
Sample Tissue: Human Fetal Muscle  
Antibody Dilution: 1.0µg/ml



Host: Rabbit  
Target Name: ZNF238  
Sample Tissue: Human Adult Placenta  
Antibody Dilution: 1.0µg/ml



Host: Rabbit  
Target Name: ZNF238  
Sample Tissue: Human Fetal Stomach  
Antibody Dilution: 1.0µg/ml



## ZNF238 antibody - N-terminal region - References

Gregory, S.G., (2006) Nature 441 (7091), 315-321 Reconstitution and Storage: For short term use, store at 2-8°C up to 1 week. For long term storage, store at -20°C in small aliquots to prevent freeze-thaw cycles.