

ZNF238 Antibody - N-terminal region
Rabbit Polyclonal Antibody
Catalog # AI10885**Specification**

ZNF238 Antibody - N-terminal region - Product Information

Application	WB
Primary Accession	Q99592
Other Accession	NM_006352 , NP_006343
Reactivity	Human, Mouse, Rat, Rabbit, Pig, Horse, Bovine, Dog
Predicted	Human, Mouse, Rat, Rabbit, Pig, Horse, Bovine, Dog
Host	Rabbit
Clonality	Polyclonal
Calculated MW	58kDa kDa

ZNF238 Antibody - N-terminal region - Additional Information**Gene ID** 10472**Alias Symbol** C2H2-171, RP58, TAZ-1, ZBTB18, ZNF238**Other Names**

Zinc finger and BTB domain-containing protein 18, 58 kDa repressor protein, Transcriptional repressor RP58, Translin-associated zinc finger protein 1, TAZ-1, Zinc finger protein 238, Zinc finger protein C2H2-171, ZBTB18, RP58, TAZ1, ZNF238

Format

Liquid. Purified antibody supplied in 1x PBS buffer with 0.09% (w/v) sodium azide and 2% sucrose.

Reconstitution & Storage

Add 50 ul of distilled water. Final anti-ZNF238 antibody concentration is 1 mg/ml in PBS buffer with 2% sucrose. For longer periods of storage, store at 20°C. Avoid repeat freeze-thaw cycles.

Precautions

ZNF238 Antibody - N-terminal region is for research use only and not for use in diagnostic or therapeutic procedures.

ZNF238 Antibody - N-terminal region - Protein Information**Name** ZBTB18**Synonyms** RP58, TAZ1, ZNF238**Function**

Transcriptional repressor that plays a role in various developmental processes such as myogenesis and brain development. Plays a key role in myogenesis by directly repressing the expression of ID2 and ID3, 2 inhibitors of skeletal myogenesis. Also involved in controlling cell division of

progenitor cells and regulating the survival of postmitotic cortical neurons. Specifically binds the consensus DNA sequence 5'-[AC]ACATCTG[GT][AC]-3' which contains the E box core, and acts by recruiting chromatin remodeling multiprotein complexes. May also play a role in the organization of chromosomes in the nucleus.

Cellular Location

Nucleus. Note=Associates with condensed chromatin

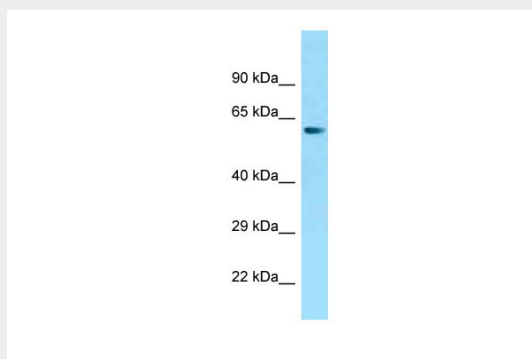
Tissue Location

Lymphoid tissues, testis, heart, brain, skeletal muscle, and pancreas and, at much lower level, other tissues

ZNF238 Antibody - N-terminal region - Protocols

Provided below are standard protocols that you may find useful for product applications.

- [Western Blot](#)
- [Blocking Peptides](#)
- [Dot Blot](#)
- [Immunohistochemistry](#)
- [Immunofluorescence](#)
- [Immunoprecipitation](#)
- [Flow Cytometry](#)
- [Cell Culture](#)

ZNF238 Antibody - N-terminal region - Images

WB Suggested Anti-ZNF238 Antibody Titration: 1.0 µg/ml
Positive Control: THP-1 Whole Cell