

ZIC2 antibody - C-terminal region
Rabbit Polyclonal Antibody
Catalog # AI10893**Specification**

ZIC2 antibody - C-terminal region - Product Information

Application	IHC, WB
Primary Accession	O95409
Other Accession	NM_007129 , NP_009060
Reactivity	Human, Mouse, Rat
Predicted	Human, Pig
Host	Rabbit
Clonality	Polyclonal
Calculated MW	55kDa KDa

ZIC2 antibody - C-terminal region - Additional Information**Gene ID** 7546

Alias Symbol	HPE5
Other Names	
Zinc finger protein ZIC 2, Zinc finger protein of the cerebellum 2, ZIC2	

Format

Liquid. Purified antibody supplied in 1x PBS buffer with 0.09% (w/v) sodium azide and 2% sucrose.

Reconstitution & Storage

Add 50 ul of distilled water. Final anti-ZIC2 antibody concentration is 1 mg/ml in PBS buffer with 2% sucrose. For longer periods of storage, store at 20°C. Avoid repeat freeze-thaw cycles.

Precautions

ZIC2 antibody - C-terminal region is for research use only and not for use in diagnostic or therapeutic procedures.

ZIC2 antibody - C-terminal region - Protein Information**Name** ZIC2**Function**

Acts as a transcriptional activator or repressor. Plays important roles in the early stage of organogenesis of the CNS. Activates the transcription of the serotonin transporter SERT in uncrossed ipsilateral retinal ganglion cells (iRGCs) to refine eye- specific projections in primary visual targets. Its transcriptional activity is repressed by MDFIC. Involved in the formation of the ipsilateral retinal projection at the optic chiasm midline. Drives the expression of EPHB1 on ipsilaterally projecting growth cones. Binds to the minimal GLI-consensus sequence 5'-TGGGTGGTC-3'. Associates to the basal SERT promoter region from ventrotemporal retinal segments of retinal embryos.

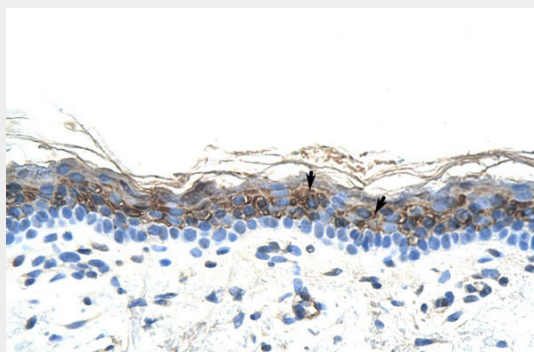
Cellular Location

Nucleus. Cytoplasm. Note=Localizes in the cytoplasm in presence of MDFIC overexpression. Both phosphorylated and unphosphorylated forms are localized in the nucleus (By similarity).

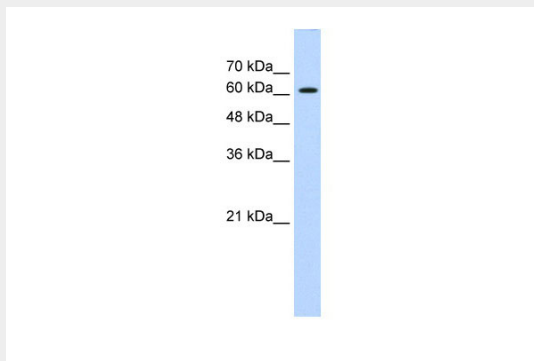
ZIC2 antibody - C-terminal region - Protocols

Provided below are standard protocols that you may find useful for product applications.

- [Western Blot](#)
- [Blocking Peptides](#)
- [Dot Blot](#)
- [Immunohistochemistry](#)
- [Immunofluorescence](#)
- [Immunoprecipitation](#)
- [Flow Cytometry](#)
- [Cell Culture](#)

ZIC2 antibody - C-terminal region - Images

Human Skin

A Western blot image showing a single band of ZIC2 protein. The molecular weight markers are indicated on the left: 70 kDa, 60 kDa, 48 kDa, 36 kDa, and 21 kDa. The ZIC2 band is located between the 48 kDa and 60 kDa markers, at approximately 55 kDa.

70 kDa
60 kDa
48 kDa
36 kDa
21 kDa

WB Suggested Anti-ZIC2 Antibody Titration: 0.2-1 μ g/ml
Positive Control: HepG2 cell lysate

ZIC2 antibody - C-terminal region - References

Brown,L., (2005) Hum. Mol. Genet. 14 (3), 411-420 Reconstitution and Storage:For short term use, store at 2-8C up to 1 week. For long term storage, store at -20C in small aliquots to prevent freeze-thaw cycles.