

FOXB1 antibody - middle region
Rabbit Polyclonal Antibody
Catalog # AI10897**Specification**

FOXB1 antibody - middle region - Product Information

| | |
|-------------------|---|
| Application | WB |
| Primary Accession | Q99853 |
| Other Accession | NM_012182 , NP_036314 |
| Reactivity | Human, Mouse, Rat, Zebrafish, Horse, Bovine, Dog |
| Predicted | Mouse, Rat |
| Host | Rabbit |
| Clonality | Polyclonal |
| Calculated MW | 35kDa KDa |

FOXB1 antibody - middle region - Additional Information**Gene ID** 27023**Alias Symbol** FKH5, HFKH-5
Other Names
Forkhead box protein B1, Transcription factor FKH-5, FOXB1, FKH5**Format**

Liquid. Purified antibody supplied in 1x PBS buffer with 0.09% (w/v) sodium azide and 2% sucrose.

Reconstitution & Storage

Add 50 ul of distilled water. Final anti-FOXB1 antibody concentration is 1 mg/ml in PBS buffer with 2% sucrose. For longer periods of storage, store at 20°C. Avoid repeat freeze-thaw cycles.

Precautions

FOXB1 antibody - middle region is for research use only and not for use in diagnostic or therapeutic procedures.

FOXB1 antibody - middle region - Protein Information**Name** FOXB1**Synonyms** FKH5**Function**

Transcription factor expressed by neural progenitor cells in specific regions of the embryonic neuroepithelium. Essential for the mammillary nuclei maintenance. Negatively regulates the proliferation of oligodendrocyte progenitors and promotes oligodendrocyte maturation. Also expressed in mammary glands, plays a role in lactation, controls development of mammary glands and the inferior colliculi of the midbrain in the central nervous system that regulates the milk-ejection reflex.

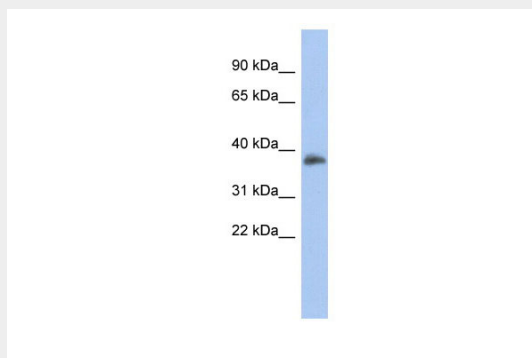
Cellular Location

Nucleus {ECO:0000250|UniProtKB:Q64732}.

FOXB1 antibody - middle region - Protocols

Provided below are standard protocols that you may find useful for product applications.

- [Western Blot](#)
- [Blocking Peptides](#)
- [Dot Blot](#)
- [Immunohistochemistry](#)
- [Immunofluorescence](#)
- [Immunoprecipitation](#)
- [Flow Cytometry](#)
- [Cell Culture](#)

FOXB1 antibody - middle region - Images

WB Suggested Anti-FOXB1 Antibody Titration: 0.2-1 μ g/ml

ELISA Titer: 1:62500

Positive Control: Human Spleen

FOXB1 antibody - middle region - References

Kimura, K., (2006) Genome Res. 16 (1), 55-65 Reconstitution and Storage: For short term use, store at 2-8C up to 1 week. For long term storage, store at -20C in small aliquots to prevent freeze-thaw cycles.