

AES antibody - C-terminal region
Rabbit Polyclonal Antibody
Catalog # AI10997**Specification**

AES antibody - C-terminal region - Product Information

Application	WB
Primary Accession	Q08117
Other Accession	NM_001130 , NP_001121
Reactivity	Human, Mouse, Rat, Bovine
Predicted	Human, Mouse, Rat, Bovine, Dog
Host	Rabbit
Clonality	Polyclonal
Calculated MW	22kDa KDa

AES antibody - C-terminal region - Additional Information**Gene ID 166**

Alias Symbol **AES-1, AES-2, ESP1, GRG, GRG5, TLE5**
Other Names

Amino-terminal enhancer of split, Amino enhancer of split, Gp130-associated protein GAM, Grg-5, Groucho-related protein 5, Protein ESP1, Protein GRG, AES, GRG, GRG5

Format

Liquid. Purified antibody supplied in 1x PBS buffer with 0.09% (w/v) sodium azide and 2% sucrose.

Reconstitution & Storage

Add 100 ul of distilled water. Final anti-AES antibody concentration is 1 mg/ml in PBS buffer with 2% sucrose. For longer periods of storage, store at 20°C. Avoid repeat freeze-thaw cycles.

Precautions

AES antibody - C-terminal region is for research use only and not for use in diagnostic or therapeutic procedures.

AES antibody - C-terminal region - Protein Information

Name TLE5 ([HGNC:307](#))

Synonyms AES, GRG, GRG5

Function

Transcriptional corepressor. Acts as a dominant repressor towards other family members. Inhibits NF-kappa-B-regulated gene expression. May be required for the initiation and maintenance of the differentiated state. Essential for the transcriptional repressor activity of SIX3 during retina and lens development.

Cellular Location

Nucleus.

Tissue Location

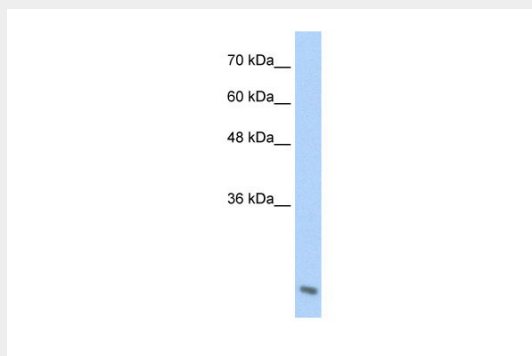
Found predominantly in muscle, heart and Placenta. In fetal tissues, abundantly expressed in the heart, lung, kidney, brain and liver

AES antibody - C-terminal region - Protocols

Provided below are standard protocols that you may find useful for product applications.

- [Western Blot](#)
- [Blocking Peptides](#)
- [Dot Blot](#)
- [Immunohistochemistry](#)
- [Immunofluorescence](#)
- [Immunoprecipitation](#)
- [Flow Cytometry](#)
- [Cell Culture](#)

AES antibody - C-terminal region - Images



WB Suggested Anti-AES Antibody Titration: 2.5µg/ml

Positive Control: Jurkat cell lysate

AES is supported by BioGPS gene expression data to be expressed in Jurkat

AES antibody - C-terminal region - References

Jan,Y., (2004) Cell 116 (5), 751-762
Reconstitution and Storage: For short term use, store at 2-8C up to 1 week. For long term storage, store at -20C in small aliquots to prevent freeze-thaw cycles.