

Mcm10 antibody - N-terminal region
Rabbit Polyclonal Antibody
Catalog # AI11014**Specification**

Mcm10 antibody - N-terminal region - Product Information

Application	WB
Primary Accession	Q0VBD2
Other Accession	NM_027290 , NP_081566
Reactivity	Human, Mouse, Rat, Rabbit, Bovine, Dog
Predicted	Human, Mouse, Rat, Dog
Host	Rabbit
Clonality	Polyclonal
Calculated MW	98kDa KDa

Mcm10 antibody - N-terminal region - Additional Information**Gene ID** 70024**Alias Symbol** 2410041F14Rik, AU018508, C330019M07Rik, C79164**Other Names**

Protein MCM10 homolog, Mcm10

Format

Liquid. Purified antibody supplied in 1x PBS buffer with 0.09% (w/v) sodium azide and 2% sucrose.

Reconstitution & Storage

Add 50 ul of distilled water. Final anti-Mcm10 antibody concentration is 1 mg/ml in PBS buffer with 2% sucrose. For longer periods of storage, store at 20°C. Avoid repeat freeze-thaw cycles.

Precautions

Mcm10 antibody - N-terminal region is for research use only and not for use in diagnostic or therapeutic procedures.

Mcm10 antibody - N-terminal region - Protein Information**Name** Mcm10**Function**

Acts as a replication initiation factor that brings together the MCM2-7 helicase and the DNA polymerase alpha/primase complex in order to initiate DNA replication. Additionally, plays a role in preventing DNA damage during replication. Key effector of the RBBP6 and ZBTB38-mediated regulation of DNA-replication and common fragile sites stability; acts as a direct target of transcriptional repression by ZBTB38 (By similarity).

Cellular Location

Nucleus {ECO:0000250|UniProtKB:Q7L590}. Note=Colocalizes with ORC2 in nuclei foci. Associated

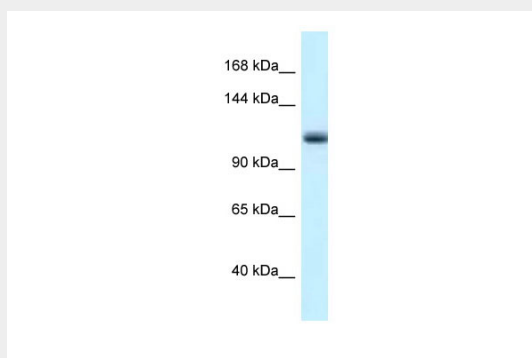
with chromatin in S phase (By similarity). {ECO:0000250|UniProtKB:Q7L590}

Mcm10 antibody - N-terminal region - Protocols

Provided below are standard protocols that you may find useful for product applications.

- [Western Blot](#)
- [Blocking Peptides](#)
- [Dot Blot](#)
- [Immunohistochemistry](#)
- [Immunofluorescence](#)
- [Immunoprecipitation](#)
- [Flow Cytometry](#)
- [Cell Culture](#)

Mcm10 antibody - N-terminal region - Images



WB Suggested Anti-Mcm10 Antibody Titration: 1.0 µg/ml
Positive Control: Mouse Pancreas