

KI antibody - N-terminal region
Rabbit Polyclonal Antibody
Catalog # AI11015**Specification**

KI antibody - N-terminal region - Product Information

Application	WB
Primary Accession	O35082
Other Accession	NM_013823 , NP_038851
Reactivity	Human, Mouse, Rat, Rabbit, Pig, Horse, Bovine
Predicted	Human, Mouse, Rat, Rabbit, Pig, Chicken, Bovine
Host	Rabbit
Clonality	Polyclonal
Calculated MW	116kDa KDa

KI antibody - N-terminal region - Additional Information**Gene ID** 16591

Alias Symbol	alpha-kl
Other Names	
Klotho, 3.2.1.31, Klotho peptide, KI	

Format

Liquid. Purified antibody supplied in 1x PBS buffer with 0.09% (w/v) sodium azide and 2% sucrose.

Reconstitution & Storage

Add 50 ul of distilled water. Final anti-KI antibody concentration is 1 mg/ml in PBS buffer with 2% sucrose. For longer periods of storage, store at 20°C. Avoid repeat freeze-thaw cycles.

Precautions

KI antibody - N-terminal region is for research use only and not for use in diagnostic or therapeutic procedures.

KI antibody - N-terminal region - Protein Information**Name** KI**Function**

May have weak glycosidase activity towards glucuronylated steroids. However, it lacks essential active site Glu residues at positions 241 and 874, suggesting it may be inactive as a glycosidase in vivo. May be involved in the regulation of calcium and phosphorus homeostasis by inhibiting the synthesis of active vitamin D. Essential factor for the specific interaction between FGF23 and FGFR1.

Cellular Location

[Isoform 1]: Cell membrane; Single-pass type I membrane protein. Apical cell membrane; Single-pass type I membrane protein. Note=Isoform 1 shedding leads to a soluble peptide. [Klotho peptide]: Secreted

Tissue Location

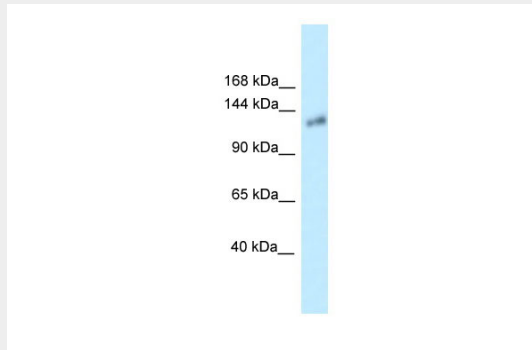
Membrane-bound protein is present in distal renal tubules, inner ear, ependymal cells of brain choroid plexus, elongating spermatids and mature oocytes (at protein level). Soluble peptide is present in serum (100 pM) and cerebrospinal fluid. Expressed strongly in kidney, moderately in brain choroid plexus, and at low levels in pituitary, placenta, skeletal muscle, urinary bladder, aorta, pancreas, testis, ovary, colon, thyroid gland and adipocytes

KI antibody - N-terminal region - Protocols

Provided below are standard protocols that you may find useful for product applications.

- [Western Blot](#)
- [Blocking Peptides](#)
- [Dot Blot](#)
- [Immunohistochemistry](#)
- [Immunofluorescence](#)
- [Immunoprecipitation](#)
- [Flow Cytometry](#)
- [Cell Culture](#)

KI antibody - N-terminal region - Images



WB Suggested Anti-KI Antibody Titration: 1.0 µg/ml

Positive Control: Mouse Small Intestine