

**Cdx1 antibody - C-terminal region**  
**Rabbit Polyclonal Antibody**  
**Catalog # AI11105****Specification**

---

**Cdx1 antibody - C-terminal region - Product Information**

Application	WB
Primary Accession	<a href="#">P18111</a>
Other Accession	<a href="#">NM_009880</a> , <a href="#">NP_034010</a>
Reactivity	Mouse, Rat, Rabbit, Pig, Horse, Bovine
Predicted	Mouse, Rat, Rabbit, Bovine
Host	Rabbit
Clonality	Polyclonal
Calculated MW	28 KDa

**Cdx1 antibody - C-terminal region - Additional Information****Gene ID** 12590**Alias Symbol** Cdx, Cdx-1**Other Names**

Homeobox protein CDX-1, Caudal-type homeobox protein 1, Cdx1, Cdx-1

**Format**

Liquid. Purified antibody supplied in 1x PBS buffer with 0.09% (w/v) sodium azide and 2% sucrose.

**Reconstitution & Storage**

Add 50 ul of distilled water. Final anti-Cdx1 antibody concentration is 1 mg/ml in PBS buffer with 2% sucrose. For longer periods of storage, store at 20°C. Avoid repeat freeze-thaw cycles.

**Precautions**

Cdx1 antibody - C-terminal region is for research use only and not for use in diagnostic or therapeutic procedures.

**Cdx1 antibody - C-terminal region - Protein Information****Name** Cdx1**Synonyms** Cdx-1**Function**

Plays a role in transcriptional regulation. Involved in activated KRAS-mediated transcriptional activation of PRKD1 in colorectal cancer (CRC) cells. Binds to the PRKD1 promoter in colorectal cancer (CRC) cells. Could play a role in the terminal differentiation of the intestine. Binds preferentially to methylated DNA.

**Cellular Location**

Nucleus.

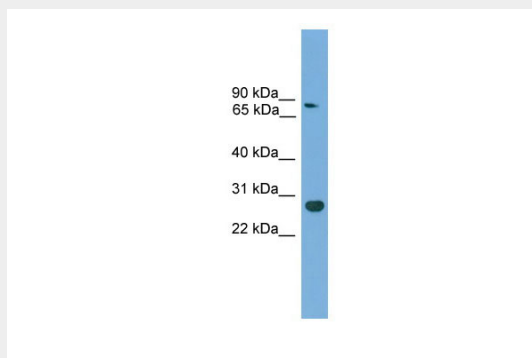
**Tissue Location**  
Intestinal epithelium.

### **Cdx1 antibody - C-terminal region - Protocols**

Provided below are standard protocols that you may find useful for product applications.

- [Western Blot](#)
- [Blocking Peptides](#)
- [Dot Blot](#)
- [Immunohistochemistry](#)
- [Immunofluorescence](#)
- [Immunoprecipitation](#)
- [Flow Cytometry](#)
- [Cell Culture](#)

### **Cdx1 antibody - C-terminal region - Images**



WB Suggested Anti-Cdx1 Antibody Titration: 0.2-1  $\mu$ g/ml  
Positive Control: Mouse Muscle