

Eomes antibody - C-terminal region
Rabbit Polyclonal Antibody
Catalog # AI11107**Specification**

Eomes antibody - C-terminal region - Product Information

Application	IHC, WB
Primary Accession	O54839
Other Accession	NM_010136 , NP_034266
Reactivity	Mouse, Rat, Pig, Bovine, Dog
Predicted	Rabbit, Chicken
Host	Rabbit
Clonality	Polyclonal
Calculated MW	75kDa KDa

Eomes antibody - C-terminal region - Additional Information**Gene ID** 13813**Alias Symbol** **C77258, Tbr2, TBR-2**
Other Names
Eomesodermin homolog, T-box brain protein 2, T-brain-2, TBR-2, Eomes, Tbr2**Format**

Liquid. Purified antibody supplied in 1x PBS buffer with 0.09% (w/v) sodium azide and 2% sucrose.

Reconstitution & Storage

Add 50 ul of distilled water. Final anti-Eomes antibody concentration is 1 mg/ml in PBS buffer with 2% sucrose. For longer periods of storage, store at 20°C. Avoid repeat freeze-thaw cycles.

Precautions

Eomes antibody - C-terminal region is for research use only and not for use in diagnostic or therapeutic procedures.

Eomes antibody - C-terminal region - Protein Information**Name** Eomes**Synonyms** Tbr2**Function**

Functions as a transcriptional activator playing a crucial role during development. Functions in trophoblast differentiation and later in gastrulation, regulating both mesoderm delamination and endoderm specification. Plays a role in brain development being required for the specification and the proliferation of the intermediate progenitor cells and their progeny in the cerebral cortex. Also involved in the differentiation of CD8+ T-cells during immune response regulating the expression of lytic effector genes.

Cellular Location

Nucleus.

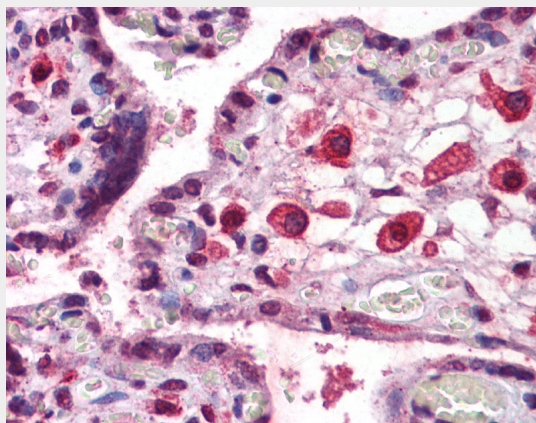
Tissue Location

Expressed in CD8+ T-cells.

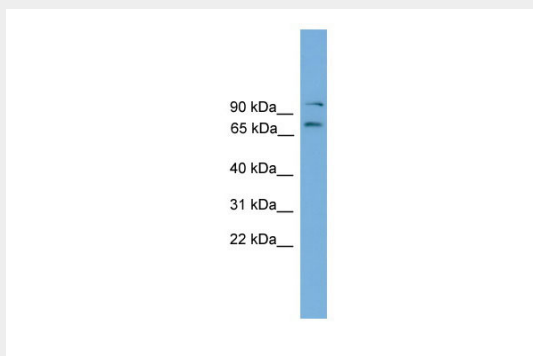
Eomes antibody - C-terminal region - Protocols

Provided below are standard protocols that you may find useful for product applications.

- [Western Blot](#)
- [Blocking Peptides](#)
- [Dot Blot](#)
- [Immunohistochemistry](#)
- [Immunofluorescence](#)
- [Immunoprecipitation](#)
- [Flow Cytometry](#)
- [Cell Culture](#)

Eomes antibody - C-terminal region - Images

Immunohistochemistry with Placenta tissue at an antibody concentration of Dilution: 1:200 using anti-Eomes antibody (AI11107)



WB Suggested Anti-Eomes Antibody Titration: 0.2-1 µg/ml
Positive Control: Mouse Muscle