

**Hoxa1 Antibody - C-terminal region**  
**Rabbit Polyclonal Antibody**  
**Catalog # AI11115****Specification**

---

**Hoxa1 Antibody - C-terminal region - Product Information**

Application	WB
Primary Accession	<a href="#">O08656</a>
Other Accession	<a href="#">NM_013075</a> , <a href="#">NP_037207</a>
Reactivity	Human, Mouse, Rat, Rabbit, Zebrafish, Pig, Horse, Bovine, Dog
Predicted	Human, Mouse, Rat, Rabbit, Zebrafish, Pig, Horse, Bovine, Dog
Host	Rabbit
Clonality	Polyclonal
Calculated MW	36kDa kDa

**Hoxa1 Antibody - C-terminal region - Additional Information****Other Names**

Homeobox protein Hox-A1, Hoxa1

**Format**

Liquid. Purified antibody supplied in 1x PBS buffer with 0.09% (w/v) sodium azide and 2% sucrose.

**Reconstitution & Storage**

Add 50 ul of distilled water. Final anti-Hoxa1 antibody concentration is 1 mg/ml in PBS buffer with 2% sucrose. For longer periods of storage, store at 20°C. Avoid repeat freeze-thaw cycles.

**Precautions**

Hoxa1 Antibody - C-terminal region is for research use only and not for use in diagnostic or therapeutic procedures.

**Hoxa1 Antibody - C-terminal region - Protein Information**

**Name** Hoxa1

**Function**

Sequence-specific transcription factor (By similarity). Regulates multiple developmental processes including brainstem, inner and outer ear, abducens nerve and cardiovascular development and morphogenesis as well as cognition and behavior (By similarity). Also part of a developmental regulatory system that provides cells with specific positional identities on the anterior-posterior axis. Acts on the anterior body structures. Seems to act in the maintenance and/or generation of hindbrain segments (By similarity). Activates transcription in the presence of PBX1A and PKNOX1 (By similarity).

**Cellular Location**

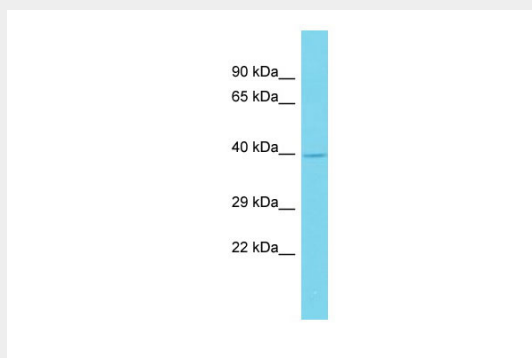
Nucleus {ECO:0000255|PROSITE-ProRule:PRU00108}.

## Hoxa1 Antibody - C-terminal region - Protocols

Provided below are standard protocols that you may find useful for product applications.

- [Western Blot](#)
- [Blocking Peptides](#)
- [Dot Blot](#)
- [Immunohistochemistry](#)
- [Immunofluorescence](#)
- [Immunoprecipitation](#)
- [Flow Cytometry](#)
- [Cell Culture](#)

## Hoxa1 Antibody - C-terminal region - Images



Host: Rabbit  
Target Name: Hoxa1  
Sample Tissue: Rat Small Intestine lysates  
Antibody Dilution: 1.0µg/ml