

**STAT5B antibody - middle region**  
**Rabbit Polyclonal Antibody**  
**Catalog # AI11136****Specification**

---

**STAT5B antibody - middle region - Product Information**

Application	IHC, WB
Primary Accession	<a href="#">P42232</a>
Other Accession	<a href="#">NM_011489</a> , <a href="#">NP_035619</a>
Reactivity	Human, Mouse, Rat, Rabbit, Zebrafish, Pig, Goat, Sheep, Horse, Bovine, Dog
Predicted Host	Human, Rabbit, Pig, Chicken, Horse, Dog
Clonality	Rabbit
Calculated MW	Polyclonal 86kDa KDa

**STAT5B antibody - middle region - Additional Information****Gene ID** 20851**Other Names**

Signal transducer and activator of transcription 5B, Stat5b

**Format**

Liquid. Purified antibody supplied in 1x PBS buffer with 0.09% (w/v) sodium azide and 2% sucrose.

**Reconstitution & Storage**

Add 100 ul of distilled water. Final anti-STAT5B antibody concentration is 1 mg/ml in PBS buffer with 2% sucrose. For longer periods of storage, store at 20°C. Avoid repeat freeze-thaw cycles.

**Precautions**

STAT5B antibody - middle region is for research use only and not for use in diagnostic or therapeutic procedures.

**STAT5B antibody - middle region - Protein Information****Name** Stat5b**Function**

Carries out a dual function: signal transduction and activation of transcription. Mediates cellular responses to the cytokine KITLG/SCF and other growth factors. Binds to the GAS element and activates PRL-induced transcription. Positively regulates hematopoietic/erythroid differentiation.

**Cellular Location**

Cytoplasm. Nucleus. Note=Translocated into the nucleus in response to phosphorylation

**Tissue Location**

In the virgin, found in most tissues. Particularly abundant in muscle tissue of virgin and lactating

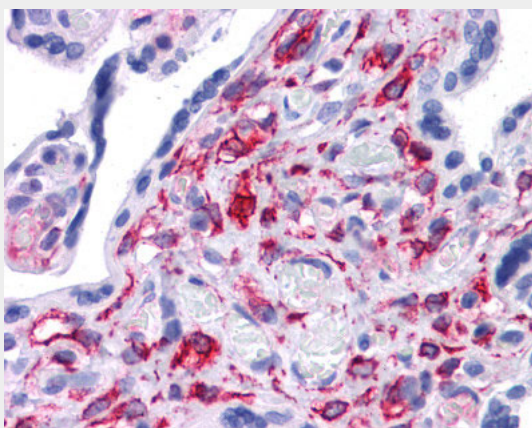
females, and of males.

### **STAT5B antibody - middle region - Protocols**

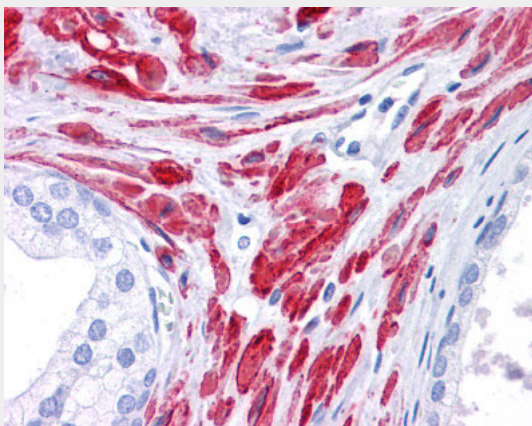
Provided below are standard protocols that you may find useful for product applications.

- [Western Blot](#)
- [Blocking Peptides](#)
- [Dot Blot](#)
- [Immunohistochemistry](#)
- [Immunofluorescence](#)
- [Immunoprecipitation](#)
- [Flow Cytometry](#)
- [Cell Culture](#)


### **STAT5B antibody - middle region - Images**



Human Prostate



Human Prostate



90 kDa\_\_  
59 kDa\_\_  
38 kDa\_\_

WB Suggested Anti-STAT5B Antibody Titration: 5.0µg/ml

Positive Control: Muscle lysate

### **STAT5B antibody - middle region - References**

Laloraya, M., et al., (2006) Diabetes 55 (3), 734-741  
**Reconstitution and Storage:** For short term use, store at 2-8°C up to 1 week. For long term storage, store at -20°C in small aliquots to prevent freeze-thaw cycles.