

Stat5b antibody - C-terminal region
Rabbit Polyclonal Antibody
Catalog # AI11137**Specification**

Stat5b antibody - C-terminal region - Product Information

Application	IHC, WB
Primary Accession	P42232
Other Accession	NM_011489 , NP_035619
Reactivity	Human, Mouse, Rat, Rabbit, Zebrafish, Horse, Bovine, Dog
Predicted Host	Human, Rabbit, Pig, Chicken, Horse, Dog
Clonality	Rabbit
Calculated MW	Polyclonal 90kDa KDa

Stat5b antibody - C-terminal region - Additional Information**Gene ID** 20851**Other Names**

Signal transducer and activator of transcription 5B, Stat5b

Format

Liquid. Purified antibody supplied in 1x PBS buffer with 0.09% (w/v) sodium azide and 2% sucrose.

Reconstitution & Storage

Add 50 ul of distilled water. Final anti-Stat5b antibody concentration is 1 mg/ml in PBS buffer with 2% sucrose. For longer periods of storage, store at 20°C. Avoid repeat freeze-thaw cycles.

Precautions

Stat5b antibody - C-terminal region is for research use only and not for use in diagnostic or therapeutic procedures.

Stat5b antibody - C-terminal region - Protein Information**Name** Stat5b**Function**

Carries out a dual function: signal transduction and activation of transcription. Mediates cellular responses to the cytokine KITLG/SCF and other growth factors. Binds to the GAS element and activates PRL-induced transcription. Positively regulates hematopoietic/erythroid differentiation.

Cellular Location

Cytoplasm. Nucleus. Note=Translocated into the nucleus in response to phosphorylation

Tissue Location

In the virgin, found in most tissues. Particularly abundant in muscle tissue of virgin and lactating

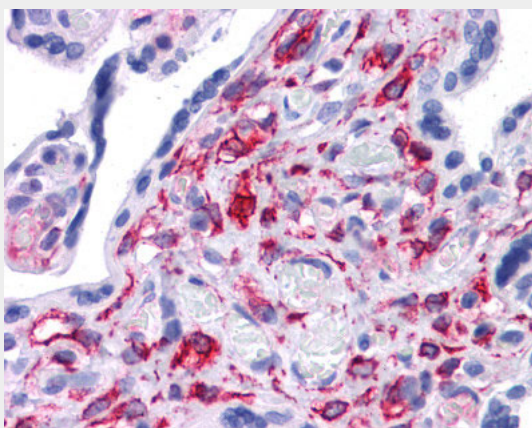
females, and of males.

Stat5b antibody - C-terminal region - Protocols

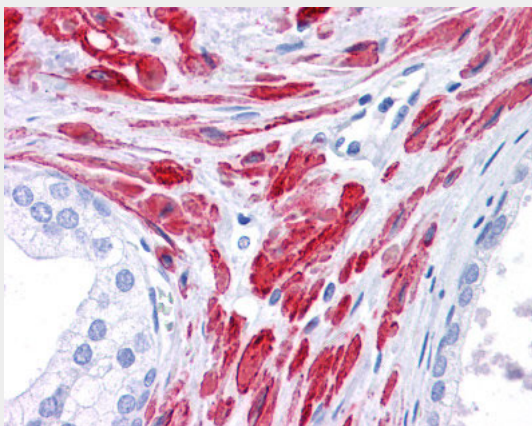
Provided below are standard protocols that you may find useful for product applications.

- [Western Blot](#)
- [Blocking Peptides](#)
- [Dot Blot](#)
- [Immunohistochemistry](#)
- [Immunofluorescence](#)
- [Immunoprecipitation](#)
- [Flow Cytometry](#)
- [Cell Culture](#)


Stat5b antibody - C-terminal region - Images



Human Prostate



Human Prostate



90 kDa__
65 kDa__
40 kDa__
31 kDa__
22 kDa__

WB Suggested Anti-Stat5b Antibody Titration: 1 µg/ml
Positive Control: Mouse Thymus