

Nmral1 antibody - N-terminal region
Rabbit Polyclonal Antibody
Catalog # AI11194**Specification**

Nmral1 antibody - N-terminal region - Product Information

Application	WB
Primary Accession	Q8K2T1
Other Accession	NM_026393 , NP_080669
Reactivity	Mouse, Rat, Pig, Bovine, Dog
Predicted	Mouse, Rat, Pig, Dog
Host	Rabbit
Clonality	Polyclonal
Calculated MW	34kDa KDa

Nmral1 antibody - N-terminal region - Additional Information**Gene ID** 67824**Alias Symbol** 1110025F24Rik, AI256624**Other Names**

NmrA-like family domain-containing protein 1, Nmral1

Format

Liquid. Purified antibody supplied in 1x PBS buffer with 0.09% (w/v) sodium azide and 2% sucrose.

Reconstitution & Storage

Add 50 ul of distilled water. Final anti-Nmral1 antibody concentration is 1 mg/ml in PBS buffer with 2% sucrose. For longer periods of storage, store at 20°C. Avoid repeat freeze-thaw cycles.

Precautions

Nmral1 antibody - N-terminal region is for research use only and not for use in diagnostic or therapeutic procedures.

Nmral1 antibody - N-terminal region - Protein Information**Name** Nmral1**Function**

Redox sensor protein. Undergoes restructuring and subcellular redistribution in response to changes in intracellular NADPH/NADP(+) levels. At low NADPH concentrations the protein is found mainly as a monomer, and binds argininosuccinate synthase (ASS1), the enzyme involved in nitric oxide synthesis. Association with ASS1 impairs its activity and reduces the production of nitric oxide, which subsequently prevents apoptosis. Under normal NADPH concentrations, the protein is found as a dimer and hides the binding site for ASS1. The homodimer binds one molecule of NADPH. Has higher affinity for NADPH than for NADP(+). Binding to NADPH is necessary to form a stable dimer (By similarity).

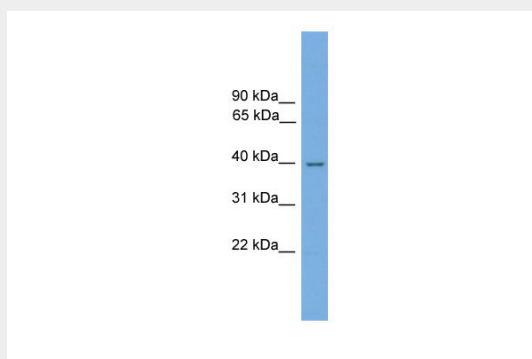
Cellular Location

Cytoplasm. Cytoplasm, perinuclear region. Nucleus. Note=Under normal redox growth conditions localizes in the cytoplasm and perinuclear region. Nuclear localization is promoted by increased intracellular nitric oxide and reduced NADPH/NADP(+) ratios (By similarity).

Nmral1 antibody - N-terminal region - Protocols

Provided below are standard protocols that you may find useful for product applications.

- [Western Blot](#)
- [Blocking Peptides](#)
- [Dot Blot](#)
- [Immunohistochemistry](#)
- [Immunofluorescence](#)
- [Immunoprecipitation](#)
- [Flow Cytometry](#)
- [Cell Culture](#)

Nmral1 antibody - N-terminal region - Images

WB Suggested Anti-Nmral1 Antibody Titration: 0.2-1 µg/ml
ELISA Titer: 1:312500
Positive Control: Mouse Heart