

Taf7l Antibody - C-terminal region
Rabbit Polyclonal Antibody
Catalog # AI11207**Specification**

Taf7l Antibody - C-terminal region - Product Information

Application	WB
Primary Accession	O9D3R9
Other Accession	NM_028958 , NP_083234
Reactivity	Mouse, Rat, Pig, Bovine
Predicted	Mouse, Rat
Host	Rabbit
Clonality	Polyclonal
Calculated MW	51kDa KDa

Taf7l Antibody - C-terminal region - Additional Information**Gene ID** 74469**Alias Symbol** 4933438I11Rik, 50kDa, Taf2q**Other Names**

Transcription initiation factor TFIID subunit 7-like, TATA box binding protein-associated factor RNA polymerase II subunit Q, TATA box-binding protein-associated factor 50 kDa, Transcription initiation factor TFIID 50 kDa subunit, Taf7l, Taf2q

Format

Liquid. Purified antibody supplied in 1x PBS buffer with 0.09% (w/v) sodium azide and 2% sucrose.

Reconstitution & Storage

Add 50 ul of distilled water. Final anti-Taf7l antibody concentration is 1 mg/ml in PBS buffer with 2% sucrose. For longer periods of storage, store at 20°C. Avoid repeat freeze-thaw cycles.

Precautions

Taf7l Antibody - C-terminal region is for research use only and not for use in diagnostic or therapeutic procedures.

Taf7l Antibody - C-terminal region - Protein Information**Name** Taf7l**Synonyms** Taf2q**Function**

Probably functions as a spermatogenesis-specific component of the DNA-binding general transcription factor complex TFIID, a multimeric protein complex that plays a central role in mediating promoter responses to various activators and repressors. May play a role in spermatogenesis.

Cellular Location

Nucleus. Cytoplasm. Note=Cytoplasmic in spermatogonia and early spermatocytes (preleptotene, leptotene, and zygotene); translocates into the nuclei of pachytene spermatocytes and round spermatids

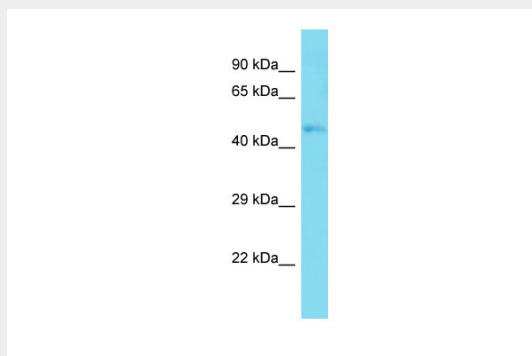
Tissue Location

Testis-specific (at protein level). Expressed during spermatogenesis from spermatogonia stage up to the stage of round spermatids.

Taf7l Antibody - C-terminal region - Protocols

Provided below are standard protocols that you may find useful for product applications.

- [Western Blot](#)
- [Blocking Peptides](#)
- [Dot Blot](#)
- [Immunohistochemistry](#)
- [Immunofluorescence](#)
- [Immunoprecipitation](#)
- [Flow Cytometry](#)
- [Cell Culture](#)

Taf7l Antibody - C-terminal region - Images

Host: Rabbit

Target Name: Taf7l

Sample Tissue: Mouse Muscle lysates

Antibody Dilution: 1.0µg/ml