

**Jundm2 antibody - C-terminal region**  
**Rabbit Polyclonal Antibody**  
**Catalog # AI11211****Specification**

---

**Jundm2 antibody - C-terminal region - Product Information**

Application	WB
Primary Accession	<a href="#">P97875</a>
Other Accession	<a href="#">NM_030887</a> , <a href="#">NP_112149</a>
Reactivity	Human, Mouse, Rat, Horse, Bovine, Dog
Predicted	Human, Mouse, Rat, Pig, Horse, Bovine, Dog
Host	Rabbit
Clonality	Polyclonal
Calculated MW	19kDa KDa

**Jundm2 antibody - C-terminal region - Additional Information****Gene ID** 81703

Alias Symbol	Jdp2, Jundp2, TIF, Jundm2
<b>Other Names</b>	
Jun dimerization protein 2, Jdp2, Jundm2	

**Format**

Liquid. Purified antibody supplied in 1x PBS buffer with 0.09% (w/v) sodium azide and 2% sucrose.

**Reconstitution & Storage**

Add 50 ul of distilled water. Final anti-Jundm2 antibody concentration is 1 mg/ml in PBS buffer with 2% sucrose. For longer periods of storage, store at 20°C. Avoid repeat freeze-thaw cycles.

**Precautions**

Jundm2 antibody - C-terminal region is for research use only and not for use in diagnostic or therapeutic procedures.

**Jundm2 antibody - C-terminal region - Protein Information****Name** Jdp2**Synonyms** Jundm2**Function**

Component of the AP-1 transcription factor that represses transactivation mediated by the Jun family of proteins. Involved in a variety of transcriptional responses associated with AP-1, such as UV- induced apoptosis, cell differentiation, tumorigenesis and antitumogeneris. Can also function as a repressor by recruiting histone deacetylase 3/HDAC3 to the promoter region of JUN. May control transcription via direct regulation of the modification of histones and the assembly of chromatin (By similarity).

**Cellular Location**

Nucleus.

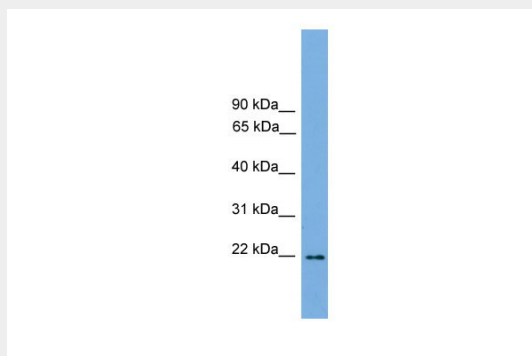
**Tissue Location**

Ubiquitously expressed in all adult tissues tested as well in embryos.

**Jundm2 antibody - C-terminal region - Protocols**

Provided below are standard protocols that you may find useful for product applications.

- [Western Blot](#)
- [Blocking Peptides](#)
- [Dot Blot](#)
- [Immunohistochemistry](#)
- [Immunofluorescence](#)
- [Immunoprecipitation](#)
- [Flow Cytometry](#)
- [Cell Culture](#)

**Jundm2 antibody - C-terminal region - Images**

WB Suggested Anti-Jundm2 Antibody Titration: 0.2-1  $\mu$ g/ml

Positive Control: Mouse Heart