

Rbm9 antibody - C-terminal region
Rabbit Polyclonal Antibody
Catalog # AI11215**Specification**

Rbm9 antibody - C-terminal region - Product Information

Application	WB
Primary Accession	Q8BP71
Other Accession	NM_053104 , NP_444334
Reactivity	Human, Mouse, Rat, Rabbit, Zebrafish, Pig, Horse, Bovine, Dog
Predicted	Human, Rat
Host	Rabbit
Clonality	Polyclonal
Calculated MW	47kDa KDa

Rbm9 antibody - C-terminal region - Additional Information**Gene ID** 93686**Alias Symbol** 2810460A15Rik, AA407676, AI118529, Fbm2, Fxh, Hrnbp2, Rbm9**Other Names**

RNA binding protein fox-1 homolog 2, Fox-1 homolog B, Fox-1 homolog Fxh, Hexaribonucleotide-binding protein 2, RNA-binding motif protein 9, RNA-binding protein 9, Rbfox2, Fox2, Fxh, Hrnbp2, Rbm9

Format

Liquid. Purified antibody supplied in 1x PBS buffer with 0.09% (w/v) sodium azide and 2% sucrose.

Reconstitution & Storage

Add 50 ul of distilled water. Final anti-Rbm9 antibody concentration is 1 mg/ml in PBS buffer with 2% sucrose. For longer periods of storage, store at 20°C. Avoid repeat freeze-thaw cycles.

Precautions

Rbm9 antibody - C-terminal region is for research use only and not for use in diagnostic or therapeutic procedures.

Rbm9 antibody - C-terminal region - Protein Information**Name** Rbfox2**Synonyms** Fox2, Fxh, Hrnbp2, Rbm9**Function**

RNA-binding protein that regulates alternative splicing events by binding to 5'-UGCAUGU-3' elements. Prevents binding of U2AF2 to the 3'-splice site. Regulates alternative splicing of tissue-specific exons and of differentially spliced exons during erythropoiesis. Seems to act as a

coregulatory factor of ER-alpha (By similarity).

Cellular Location

Nucleus. Cytoplasm.

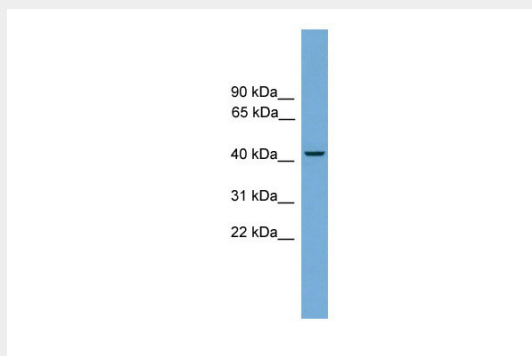
Tissue Location

Detected in brain neurons (at protein level). Detected in heart, brain, embryo, lung, liver, kidney and ovary

Rbm9 antibody - C-terminal region - Protocols

Provided below are standard protocols that you may find useful for product applications.

- [Western Blot](#)
- [Blocking Peptides](#)
- [Dot Blot](#)
- [Immunohistochemistry](#)
- [Immunofluorescence](#)
- [Immunoprecipitation](#)
- [Flow Cytometry](#)
- [Cell Culture](#)

Rbm9 antibody - C-terminal region - Images

WB Suggested Anti-Rbm9 Antibody Titration: 0.2-1 µg/ml
Positive Control: Mouse Heart