

Foxe1 antibody - C-terminal region
Rabbit Polyclonal Antibody
Catalog # AI11273**Specification**

Foxe1 antibody - C-terminal region - Product Information

Application	WB
Primary Accession	Q8R2I0
Other Accession	NM_183298 , NP_899121
Reactivity	Mouse, Rat, Rabbit, Bovine
Predicted	Mouse, Rat, Rabbit, Bovine
Host	Rabbit
Clonality	Polyclonal
Calculated MW	38kDa KDa

Foxe1 antibody - C-terminal region - Additional Information**Gene ID** 110805

Alias Symbol	Titf2
Other Names	
Forkhead box protein E1, Thyroid transcription factor 2, TTF-2, Foxe1, Titf2	

Format

Liquid. Purified antibody supplied in 1x PBS buffer with 0.09% (w/v) sodium azide and 2% sucrose.

Reconstitution & Storage

Add 50 ul of distilled water. Final anti-Foxe1 antibody concentration is 1 mg/ml in PBS buffer with 2% sucrose. For longer periods of storage, store at 20°C. Avoid repeat freeze-thaw cycles.

Precautions

Foxe1 antibody - C-terminal region is for research use only and not for use in diagnostic or therapeutic procedures.

Foxe1 antibody - C-terminal region - Protein Information**Name** Foxe1**Synonyms** Titf2**Function**

Transcription factor that binds consensus sites on a variety of gene promoters and activate their transcription. Involved in proper palate formation, most probably through the expression of MSX1 and TGFB3 genes which are direct targets of this transcription factor (PubMed:21177256). Also implicated in thyroid gland morphogenesis (PubMed:9697704). May indirectly play a role in cell growth and migration through the regulation of WNT5A expression (By

similarity).

Cellular Location

Nucleus {ECO:0000250|UniProtKB:O00358}.

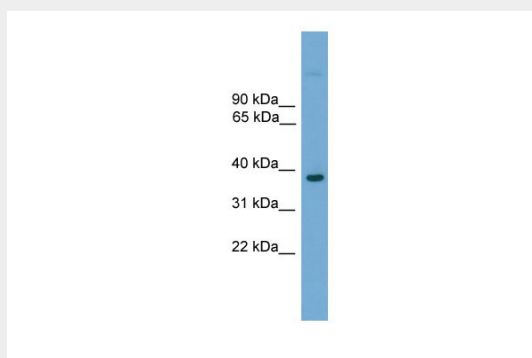
Tissue Location

Expressed in Rathke pouch, in thyroid, and in the epithelium of the pharyngeal wall and arches, whereas it is absent in the epithelium of the pharyngeal pouches

Foxe1 antibody - C-terminal region - Protocols

Provided below are standard protocols that you may find useful for product applications.

- [Western Blot](#)
- [Blocking Peptides](#)
- [Dot Blot](#)
- [Immunohistochemistry](#)
- [Immunofluorescence](#)
- [Immunoprecipitation](#)
- [Flow Cytometry](#)
- [Cell Culture](#)

Foxe1 antibody - C-terminal region - Images

WB Suggested Anti-Foxe1 Antibody Titration: 0.2-1 µg/ml
Positive Control: Mouse liver