

NR1I3 antibody - middle region
Rabbit Polyclonal Antibody
Catalog # AI11326**Specification**

NR1I3 antibody - middle region - Product Information

Application	WB
Primary Accession	O35627
Other Accession	NM_009803 , NP_033933
Reactivity	Mouse, Rat, Bovine, Dog
Predicted	Mouse, Rat, Bovine, Dog
Host	Rabbit
Clonality	Polyclonal
Calculated MW	39kDa KDa

NR1I3 antibody - middle region - Additional Information**Gene ID** 12355**Alias Symbol** CAR, MB67, Care2, ESTM32, AA209988, AI551208, CAR-beta**Other Names**

Nuclear receptor subfamily 1 group I member 3, Constitutive androstane receptor, CAR, Orphan nuclear receptor MB67, Nr1i3, Car

Format

Liquid. Purified antibody supplied in 1x PBS buffer with 0.09% (w/v) sodium azide and 2% sucrose.

Reconstitution & Storage

Add 100 ul of distilled water. Final anti-NR1I3 antibody concentration is 1 mg/ml in PBS buffer with 2% sucrose. For longer periods of storage, store at 20°C. Avoid repeat freeze-thaw cycles.

Precautions

NR1I3 antibody - middle region is for research use only and not for use in diagnostic or therapeutic procedures.

NR1I3 antibody - middle region - Protein Information**Name** Nr1i3**Synonyms** Car**Function**

Binds and transactivates the retinoic acid response elements that control expression of the retinoic acid receptor beta 2 and alcohol dehydrogenase 3 genes. Transactivates both the phenobarbital responsive element module of the human CYP2B6 gene and the CYP3A4 xenobiotic response element (By similarity).

Cellular Location

Nucleus. Cytoplasm. Cytoplasm, cytoskeleton. Note=Recruited to the cytoplasm by DNAJC7

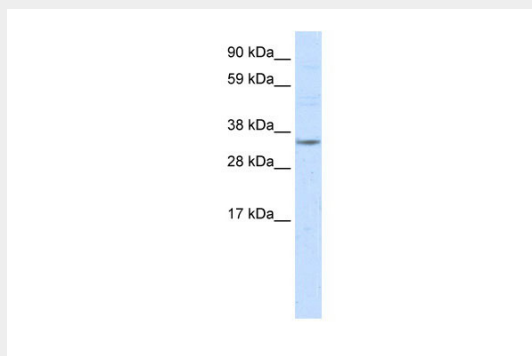
Tissue Location

Predominantly expressed in liver.

NR1I3 antibody - middle region - Protocols

Provided below are standard protocols that you may find useful for product applications.

- [Western Blot](#)
- [Blocking Peptides](#)
- [Dot Blot](#)
- [Immunohistochemistry](#)
- [Immunofluorescence](#)
- [Immunoprecipitation](#)
- [Flow Cytometry](#)
- [Cell Culture](#)

NR1I3 antibody - middle region - Images

WB Suggested Anti-NR1I3 Antibody Titration: 2.5µg/ml

ELISA Titer: 1:312500

Positive Control: NIH/3T3 cell lysate

NR1I3 antibody - middle region - References

Briancon, N. (2006) EMBO J. 25 (6), 1253-1262
Reconstitution and Storage: For short term use, store at -80C up to 1 week. For long term storage, store at -20C in small aliquots to prevent freeze-thaw cycles.