

BTF3 antibody - middle region
Rabbit Polyclonal Antibody
Catalog # AI11348**Specification**

BTF3 antibody - middle region - Product Information

Application	WB
Primary Accession	P20290
Other Accession	NM_001037637 , NP_001032726
Reactivity	Human, Mouse, Rat, Rabbit, Zebrafish, Pig, Horse, Yeast, Bovine, Dog
Predicted	Human, Mouse, Rat, Rabbit, Zebrafish, Pig, Chicken, Horse, Bovine, Dog
Host	Rabbit
Clonality	Polyclonal
Calculated MW	23kDa kDa

BTF3 antibody - middle region - Additional Information**Gene ID** 689

Alias Symbol	NACB, BTF3a, BTF3b, BETA-NAC
--------------	------------------------------

Other Names

Transcription factor BTF3, Nascent polypeptide-associated complex subunit beta, NAC-beta, RNA polymerase B transcription factor 3, BTF3, NACB

Format

Liquid. Purified antibody supplied in 1x PBS buffer with 0.09% (w/v) sodium azide and 2% sucrose.

Reconstitution & Storage

Add 100 ul of distilled water. Final anti-BTF3 antibody concentration is 1 mg/ml in PBS buffer with 2% sucrose. For longer periods of storage, store at 20°C. Avoid repeat freeze-thaw cycles.

Precautions

BTF3 antibody - middle region is for research use only and not for use in diagnostic or therapeutic procedures.

BTF3 antibody - middle region - Protein Information**Name** BTF3**Synonyms** NACB**Function**

When associated with NACA, prevents inappropriate targeting of non-secretory polypeptides to the endoplasmic reticulum (ER). Binds to nascent polypeptide chains as they emerge from the ribosome and blocks their interaction with the signal recognition particle (SRP), which normally targets nascent secretory peptides to the ER. BTF3 is also a general transcription factor that can

form a stable complex with RNA polymerase II. Required for the initiation of transcription.

Cellular Location

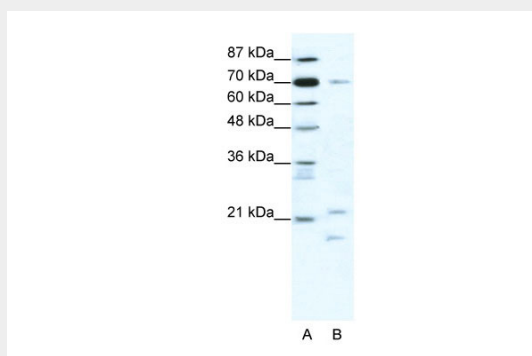
Cytoplasm. Nucleus. Note=The heterodimer with NACA is cytoplasmic

BTF3 antibody - middle region - Protocols

Provided below are standard protocols that you may find useful for product applications.

- [Western Blot](#)
- [Blocking Peptides](#)
- [Dot Blot](#)
- [Immunohistochemistry](#)
- [Immunofluorescence](#)
- [Immunoprecipitation](#)
- [Flow Cytometry](#)
- [Cell Culture](#)

BTF3 antibody - middle region - Images



WB Suggested Anti-BTF3 Antibody Titration: 1.25µg/ml

ELISA Titer: 1:312500

Positive Control: Jurkat cell lysate

BTF3 is strongly supported by BioGPS gene expression data to be expressed in Human Jurkat cells

BTF3 antibody - middle region - References

Oyake,T., et al., (2005) Gene 345 (2), 271-277
Reconstitution and Storage:For short term use, store at 2-8C up to 1 week. For long term storage, store at -20C in small aliquots to prevent freeze-thaw cycles.
Publications:Thakur, D. et al. Human beta casein fragment (54-59) modulates M. bovis BCG survival and basic transcription factor 3 (BTF3) expression in THP-1 cell line. PLoS One 7, e45905 (2012).
WB, IP, Dog, Pig, H, Rabbit, Rat, Guinea pig, Human, Zebrafish, Bovine, Mouse, Yeast23029305