

Cdx1 antibody - C-terminal region
Rabbit Polyclonal Antibody
Catalog # AI11358**Specification**

Cdx1 antibody - C-terminal region - Product Information

Application	WB
Primary Accession	P18111
Other Accession	NM_009880 , NP_034010
Reactivity	Human, Mouse, Rat, Rabbit, Zebrafish, Horse, Bovine, Dog
Predicted	Mouse, Rat, Rabbit, Zebrafish, Chicken, Bovine
Host	Rabbit
Clonality	Polyclonal
Calculated MW	28kDa KDa

Cdx1 antibody - C-terminal region - Additional Information**Gene ID** 12590

Alias Symbol	Cdx, Cdx-1
Other Names	
Homeobox protein CDX-1, Caudal-type homeobox protein 1, Cdx1, Cdx-1	

Format

Liquid. Purified antibody supplied in 1x PBS buffer with 0.09% (w/v) sodium azide and 2% sucrose.

Reconstitution & Storage

Add 50 ul of distilled water. Final anti-Cdx1 antibody concentration is 1 mg/ml in PBS buffer with 2% sucrose. For longer periods of storage, store at 20°C. Avoid repeat freeze-thaw cycles.

Precautions

Cdx1 antibody - C-terminal region is for research use only and not for use in diagnostic or therapeutic procedures.

Cdx1 antibody - C-terminal region - Protein Information**Name** Cdx1**Synonyms** Cdx-1**Function**

Plays a role in transcriptional regulation. Involved in activated KRAS-mediated transcriptional activation of PRKD1 in colorectal cancer (CRC) cells. Binds to the PRKD1 promoter in colorectal cancer (CRC) cells. Could play a role in the terminal differentiation of the intestine. Binds preferentially to methylated DNA.

Cellular Location

Nucleus.

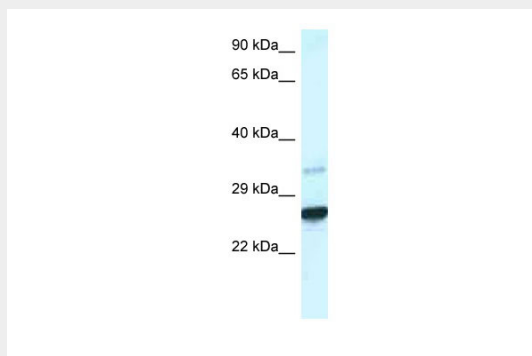
Tissue Location

Intestinal epithelium.

Cdx1 antibody - C-terminal region - Protocols

Provided below are standard protocols that you may find useful for product applications.

- [Western Blot](#)
- [Blocking Peptides](#)
- [Dot Blot](#)
- [Immunohistochemistry](#)
- [Immunofluorescence](#)
- [Immunoprecipitation](#)
- [Flow Cytometry](#)
- [Cell Culture](#)

Cdx1 antibody - C-terminal region - Images

WB Suggested Anti-Cdx1 Antibody Titration: 1.0 µg/ml

Positive Control: Mouse Liver