

**PROP1 antibody - middle region**  
**Rabbit Polyclonal Antibody**  
**Catalog # AI11458****Specification**

---

**PROP1 antibody - middle region - Product Information**

Application	WB
Primary Accession	<a href="#">O75360</a>
Other Accession	<a href="#">NM_006261</a> , <a href="#">NP_006252</a>
Reactivity	Human, Mouse, Rat, Rabbit, Pig, Sheep, Horse, Bovine, Dog
Predicted	Human, Mouse, Rat, Pig, Chicken, Sheep, Horse, Bovine, Dog
Host	Rabbit
Clonality	Polyclonal
Calculated MW	25kDa KDa

**PROP1 antibody - middle region - Additional Information****Gene ID** 5626**Alias Symbol** CPHD2, PROP-1**Other Names**

Homeobox protein prophet of Pit-1, PROP-1, Pituitary-specific homeodomain factor, PROP1

**Format**

Liquid. Purified antibody supplied in 1x PBS buffer with 0.09% (w/v) sodium azide and 2% sucrose.

**Reconstitution & Storage**

Add 50 ul of distilled water. Final anti-PROP1 antibody concentration is 1 mg/ml in PBS buffer with 2% sucrose. For longer periods of storage, store at 20°C. Avoid repeat freeze-thaw cycles.

**Precautions**

PROP1 antibody - middle region is for research use only and not for use in diagnostic or therapeutic procedures.

**PROP1 antibody - middle region - Protein Information****Name** PROP1**Function**

Possibly involved in the ontogenesis of pituitary gonadotropes, as well as somatotropes, lactotropes and caudomedial thyrotropes.

**Cellular Location**

Nucleus {ECO:0000255|PROSITE-ProRule:PRU00108}.

**Tissue Location**

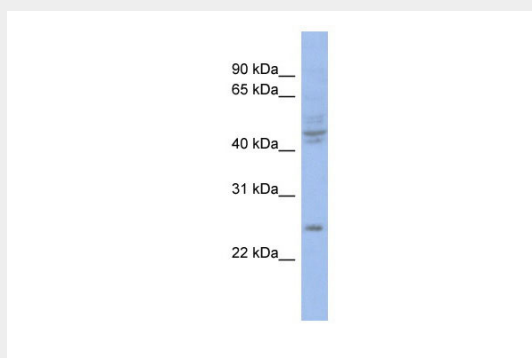
Expressed specifically in embryonic pituitary.

### **PROP1 antibody - middle region - Protocols**

Provided below are standard protocols that you may find useful for product applications.

- [Western Blot](#)
- [Blocking Peptides](#)
- [Dot Blot](#)
- [Immunohistochemistry](#)
- [Immunofluorescence](#)
- [Immunoprecipitation](#)
- [Flow Cytometry](#)
- [Cell Culture](#)

### **PROP1 antibody - middle region - Images**



WB Suggested Anti-PROP1 Antibody Titration: 0.2-1 µg/ml

ELISA Titer: 1:1562500

Positive Control: COLO205 cell lysate

PROP1 is supported by BioGPS gene expression data to be expressed in COLO205

### **PROP1 antibody - middle region - References**

Vieira, T.C., (2006) Endocrine 30 (3), 365-369 Reconstitution and Storage: For short term use, store at 2-8°C up to 1 week. For long term storage, store at -20°C in small aliquots to prevent freeze-thaw cycles.