

GRHL3 antibody - C-terminal region
Rabbit Polyclonal Antibody
Catalog # AI11561**Specification**

GRHL3 antibody - C-terminal region - Product Information

Application	IHC, WB
Primary Accession	Q8TE85
Other Accession	NM_021180 , NP_067003
Reactivity	Human, Mouse, Rat, Rabbit, Pig, Horse, Bovine, Dog
Predicted	Human, Rat, Rabbit, Pig, Horse, Bovine, Dog
Host	Rabbit
Clonality	Polyclonal
Calculated MW	68kDa KDa

GRHL3 antibody - C-terminal region - Additional Information**Gene ID** 57822**Alias Symbol** **SOM, TFCP2L4****Other Names**

Grainyhead-like protein 3 homolog, Sister of mammalian grainyhead, Transcription factor CP2-like 4, GRHL3, SOM, TFCP2L4

Format

Liquid. Purified antibody supplied in 1x PBS buffer with 0.09% (w/v) sodium azide and 2% sucrose.

Reconstitution & Storage

Add 100 ul of distilled water. Final anti-GRHL3 antibody concentration is 1 mg/ml in PBS buffer with 2% sucrose. For longer periods of storage, store at 20°C. Avoid repeat freeze-thaw cycles.

Precautions

GRHL3 antibody - C-terminal region is for research use only and not for use in diagnostic or therapeutic procedures.

GRHL3 antibody - C-terminal region - Protein Information**Name** GRHL3 ([HGNC:25839](#))**Function**Transcription factor playing important roles in primary neurulation and in the differentiation of stratified epithelia of both ectodermal and endodermal origin (By similarity). Binds directly to the consensus DNA sequence 5'-AACCGGTT-3' acting as an activator and repressor on distinct target genes (PubMed: <http://www.uniprot.org/citations/21081122> target="_blank">21081122, PubMed: <http://www.uniprot.org/citations/25347468> target="_blank">25347468). Exhibits functional redundancy with GRHL2 in epidermal

morphogenetic events and epidermal wound repair (By similarity). Exhibits functional redundancy with GRHL2 in epidermal morphogenetic events and epidermal wound repair but is essential to form the epidermal barrier with TGM3 as critical direct target gene among others. Despite being dispensable during normal epidermal homeostasis in the adulthood, is again required for barrier repair after immune-mediated epidermal damage, regulates distinct gene batteries in embryonic epidermal differentiation and adult epidermal barrier reformation after injury. Plays unique and cooperative roles with GRHL2 in establishing distinct zones of primary neurulation. Essential for spinal closure, functions cooperatively with GRHL2 in closure 2 (forebrain/midbrain boundary) and posterior neuropore closure (By similarity). Also required for proper development of the oral periderm (PubMed:24360809). No genetic interaction with GRHL3, no functional cooperativity due to diverse target gene selectivity (PubMed:21081122).

Cellular Location

Nucleus.

Tissue Location

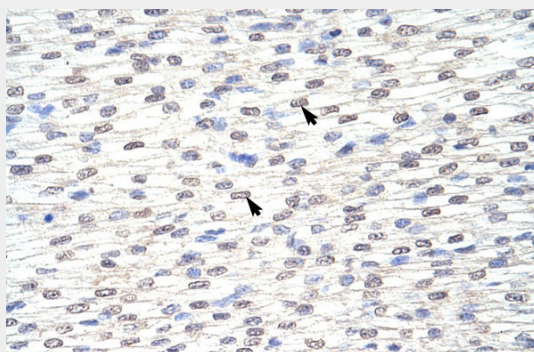
Expressed in brain, colon, pancreas, placenta and kidney. Isoform 1 is expressed in lung and tonsil. Isoform 2 is prostate-specific.

GRHL3 antibody - C-terminal region - Protocols

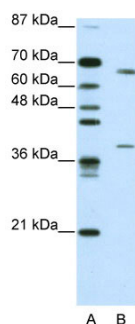
Provided below are standard protocols that you may find useful for product applications.

- [Western Blot](#)
- [Blocking Peptides](#)
- [Dot Blot](#)
- [Immunohistochemistry](#)
- [Immunofluorescence](#)
- [Immunoprecipitation](#)
- [Flow Cytometry](#)
- [Cell Culture](#)

GRHL3 antibody - C-terminal region - Images



Human Heart



WB Suggested Antibody Titration: 0.2-1 μ g/ml

Positive Control: Jurkat

GRHL3 antibody - C-terminal region - References

Ting, S.B., Biochem. J. 370 (PT 3), 953-962 (2003) Reconstitution and Storage: For short term use, store at 2-8°C up to 1 week. For long term storage, store at -20°C in small aliquots to prevent freeze-thaw cycles.