

CBLL1 antibody - N-terminal region
Rabbit Polyclonal Antibody
Catalog # AI11593**Specification**

CBLL1 antibody - N-terminal region - Product Information

| | |
|-------------------|---|
| Application | WB |
| Primary Accession | Q75N03 |
| Other Accession | NM_024814 , NP_079090 |
| Reactivity | Human, Mouse, Rat, Rabbit |
| Predicted | Human, Mouse |
| Host | Rabbit |
| Clonality | Polyclonal |
| Calculated MW | 54kDa KDa |

CBLL1 antibody - N-terminal region - Additional Information**Gene ID** 79872

| | |
|--------------|---|
| Alias Symbol | FLJ23109, HAKAI, MGC163401, MGC163403, RNF188 |
|--------------|---|

Other Names

E3 ubiquitin-protein ligase Hakai, 6.3.2.-, Casitas B-lineage lymphoma-transforming sequence-like protein 1, RING finger protein 188, c-Cbl-like protein 1, CBLL1, HAKAI, RNF188

Format

Liquid. Purified antibody supplied in 1x PBS buffer with 0.09% (w/v) sodium azide and 2% sucrose.

Reconstitution & Storage

Add 50 ul of distilled water. Final anti-CBLL1 antibody concentration is 1 mg/ml in PBS buffer with 2% sucrose. For longer periods of storage, store at 20°C. Avoid repeat freeze-thaw cycles.

Precautions

CBLL1 antibody - N-terminal region is for research use only and not for use in diagnostic or therapeutic procedures.

CBLL1 antibody - N-terminal region - Protein Information

Name CBLL1 ([HGNC:21225](#))

Function

E3 ubiquitin-protein ligase that mediates ubiquitination of several tyrosine-phosphorylated Src substrates, including CDH1, CTTN and DOK1 (By similarity). Targets CDH1 for endocytosis and degradation (By similarity). Associated component of the WMM complex, a complex that mediates N6-methyladenosine (m6A) methylation of RNAs, a modification that plays a role in the efficiency of mRNA splicing and RNA processing (PubMed:29507755). Its function in the WMM complex is unknown (PubMed:<a href="http://www.uniprot.org/citations/29507755"

target="_blank">29507755).

Cellular Location

Nucleus speckle. Nucleus, nucleoplasm. Cytoplasm {ECO:0000250|UniProtKB:Q9JIY2}.

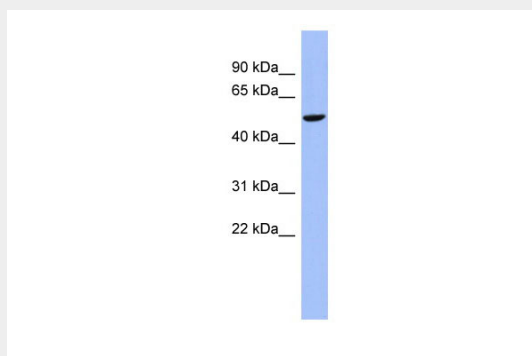
Note=Mainly nuclear with some fraction located in the cytoplasm. ZC3H13 is required to anchor component of the MACOM subcomplex, such as VIRMA, in the nucleus {ECO:0000250|UniProtKB:Q9JIY2}

CBLL1 antibody - N-terminal region - Protocols

Provided below are standard protocols that you may find useful for product applications.

- [Western Blot](#)
- [Blocking Peptides](#)
- [Dot Blot](#)
- [Immunohistochemistry](#)
- [Immunofluorescence](#)
- [Immunoprecipitation](#)
- [Flow Cytometry](#)
- [Cell Culture](#)

CBLL1 antibody - N-terminal region - Images



WB Suggested Anti-CBLL1 Antibody Titration: 0.2-1 µg/ml

ELISA Titer: 1:12500

Positive Control: COLO205 cell lysate

CBLL1 antibody - N-terminal region - References

Ota,T., J. Cell. Sci. 117 (PT 7), 989-998 (2004)Reconstitution and Storage:For short term use, store at 2-8C up to 1 week. For long term storage, store at -20C in small aliquots to prevent freeze-thaw cycles.