

DLX1 antibody - N-terminal region
Rabbit Polyclonal Antibody
Catalog # AI11661**Specification**

DLX1 antibody - N-terminal region - Product Information

Application	WB
Primary Accession	P56177
Other Accession	NM_178120 , NP_835221
Reactivity	Human, Mouse, Rat, Rabbit, Zebrafish, Pig, Horse, Bovine, Dog
Predicted Host	Mouse, Rat, Zebrafish, Chicken, Bovine
Clonality	Rabbit
Calculated MW	Polyclonal 27kDa KDa

DLX1 antibody - N-terminal region - Additional Information**Gene ID** 1745**Other Names**

Homeobox protein DLX-1, DLX1

Format

Liquid. Purified antibody supplied in 1x PBS buffer with 0.09% (w/v) sodium azide and 2% sucrose.

Reconstitution & Storage

Add 50 ul of distilled water. Final anti-DLX1 antibody concentration is 1 mg/ml in PBS buffer with 2% sucrose. For longer periods of storage, store at 20°C. Avoid repeat freeze-thaw cycles.

Precautions

DLX1 antibody - N-terminal region is for research use only and not for use in diagnostic or therapeutic procedures.

DLX1 antibody - N-terminal region - Protein Information**Name** DLX1**Function**

Plays a role as a transcriptional activator or repressor (PubMed:[14671321](http://www.uniprot.org/citations/14671321)). Inhibits several cytokine signaling pathways, such as TGFB1, activin-A/INHBA and BMP4 by interfering with the transcriptional stimulatory activity of transcription factors, such as MSX2, FAST2, SMAD2 and SMAD3 during hematopoietic cell differentiation (PubMed:[14671321](http://www.uniprot.org/citations/14671321)). Plays a role in terminal differentiation of interneurons, such as amacrine and bipolar cells in the developing retina (By similarity). Likely to play a regulatory role in the development of the ventral forebrain (By similarity). May play a role in craniofacial patterning and morphogenesis and may be involved

in the early development of diencephalic subdivisions (By similarity).

Cellular Location

Nucleus.

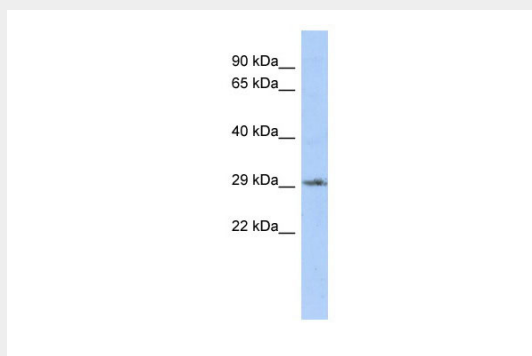
Tissue Location

Expressed in hematopoietic cell lines.

DLX1 antibody - N-terminal region - Protocols

Provided below are standard protocols that you may find useful for product applications.

- [Western Blot](#)
- [Blocking Peptides](#)
- [Dot Blot](#)
- [Immunohistochemistry](#)
- [Immunofluorescence](#)
- [Immunoprecipitation](#)
- [Flow Cytometry](#)
- [Cell Culture](#)

DLX1 antibody - N-terminal region - Images

WB Suggested Anti-DLX1 Antibody Titration: 0.2-1 µg/ml

ELISA Titer: 1:312500

Positive Control: THP-1 cell lysate

DLX1 antibody - N-terminal region - References

Kahler, A.K., (et al) Am. J. Med. Genet. B Neuropsychiatr. Genet. (2008) In press
Reconstitution and Storage: For short term use, store at 2-8°C up to 1 week. For long term storage, store at -20°C in small aliquots to prevent freeze-thaw cycles.