

PRMT2 antibody - N-terminal region
Rabbit Polyclonal Antibody
Catalog # AI11698**Specification**

PRMT2 antibody - N-terminal region - Product Information

Application	IHC, WB
Primary Accession	P55345
Other Accession	NM_001535 , NP_001526
Reactivity	Human, Mouse, Rat, Rabbit, Pig, Horse, Bovine, Dog
Predicted Host	Human, Mouse, Rat, Horse, Bovine, Dog
Clonality	Rabbit
Calculated MW	Polyclonal 48kDa KDa

PRMT2 antibody - N-terminal region - Additional Information**Gene ID 3275**Alias Symbol **HRMT1L1****Other Names**

Protein arginine N-methyltransferase 2, 2.1.1.-, Histone-arginine N-methyltransferase PRMT2, 2.1.1.125, PRMT2, HMT1, HRMT1L1

Format

Liquid. Purified antibody supplied in 1x PBS buffer with 0.09% (w/v) sodium azide and 2% sucrose.

Reconstitution & Storage

Add 100 ul of distilled water. Final anti-PRMT2 antibody concentration is 1 mg/ml in PBS buffer with 2% sucrose. For longer periods of storage, store at 20°C. Avoid repeat freeze-thaw cycles.

Precautions

PRMT2 antibody - N-terminal region is for research use only and not for use in diagnostic or therapeutic procedures.

PRMT2 antibody - N-terminal region - Protein Information**Name** PRMT2**Synonyms** HMT1, HRMT1L1**Function**

Arginine methyltransferase that methylates the guanidino nitrogens of arginyl residues in proteins such as STAT3, FBL, histone H4. Acts as a coactivator (with NCOA2) of the androgen receptor (AR)-mediated transactivation. Acts as a coactivator (with estrogen) of estrogen receptor (ER)-mediated transactivation. Enhances PGR, PPARG, RARA-mediated transactivation. May inhibit NF-kappa-B transcription and promote apoptosis. Represses E2F1 transcriptional activity (in a RB1- dependent

manner). May be involved in growth regulation.

Cellular Location

[Isoform 1]: Cytoplasm. Nucleus. Note=Translocates from the cytoplasm to the nucleus, after hormone exposure. Excluded from nucleolus [Isoform PRMT2Beta]: Cytoplasm. Nucleus. Nucleus, nucleolus [Isoform PRMT2L2]: Cytoplasm. Nucleus Note=Predominantly cytoplasmic

Tissue Location

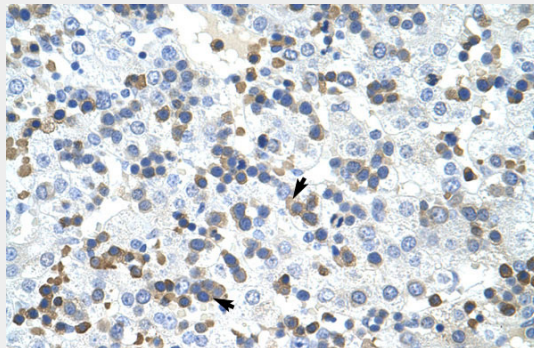
Widely expressed. Highly expressed in androgen target organs such as heart, prostate, skeletal muscle, ovary and spinal cord.

PRMT2 antibody - N-terminal region - Protocols

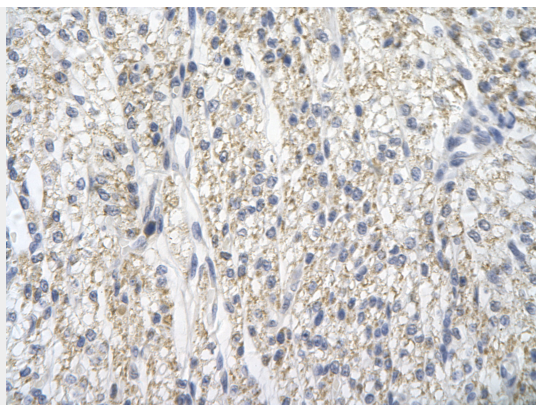
Provided below are standard protocols that you may find useful for product applications.

- [Western Blot](#)
- [Blocking Peptides](#)
- [Dot Blot](#)
- [Immunohistochemistry](#)
- [Immunofluorescence](#)
- [Immunoprecipitation](#)
- [Flow Cytometry](#)
- [Cell Culture](#)

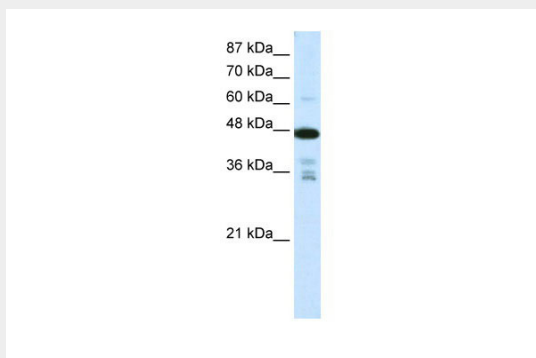
PRMT2 antibody - N-terminal region - Images



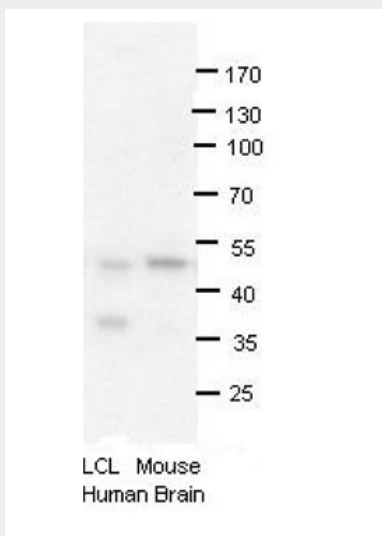
Rabbit Anti-PRMT2 Antibody
Paraffin Embedded Tissue: Human Liver
Cellular Data: Liver cells
Antibody Concentration: 4.0-8.0 µg/ml
Magnification: 400X



Rabbit Anti-PRMT2 Antibody
Paraffin Embedded Tissue: Human cardiac cell
Cellular Data: Epithelial cells of renal tubule
Antibody Concentration: 4.0-8.0 µg/ml
Magnification: 400X



WB Suggested Anti-PRMT2 Antibody Titration: 0.625µg/ml
ELISA Titer: 1:1562500
Positive Control: Jurkat cell lysate



PRMT2 antibody - N-terminal region (AI11698) validated by WB using human LCL and mouse brains at 1:1000.