

RBM4 antibody - C-terminal region
Rabbit Polyclonal Antibody
Catalog # AI11749**Specification**

RBM4 antibody - C-terminal region - Product Information

| | |
|-------------------|---|
| Application | WB |
| Primary Accession | O96LT9 |
| Other Accession | NM_002896 , NP_002887 |
| Reactivity | Human |
| Host | Rabbit |
| Clonality | Polyclonal |
| Calculated MW | 40kDa KDa |

RBM4 antibody - C-terminal region - Additional Information**Gene ID** 55599**Alias Symbol** DKFZp547K0918, LARK, MGC75138, RBM4A, ZCCHC21, ZCRB3A, hLARK**Other Names**

RNA-binding protein 40, RNA-binding motif protein 40, RNA-binding region-containing protein 3, U11/U12 small nuclear ribonucleoprotein 65 kDa protein, U11/U12 snRNP 65 kDa protein, U11/U12-65K, RNPC3, KIAA1839, RBM40, RNP

Format

Liquid. Purified antibody supplied in 1x PBS buffer with 0.09% (w/v) sodium azide and 2% sucrose.

Reconstitution & Storage

Add 50 ul of distilled water. Final anti-RBM4 antibody concentration is 1 mg/ml in PBS buffer with 2% sucrose. For longer periods of storage, store at 20°C. Avoid repeat freeze-thaw cycles.

Precautions

RBM4 antibody - C-terminal region is for research use only and not for use in diagnostic or therapeutic procedures.

RBM4 antibody - C-terminal region - Protein Information**Name** RNPC3**Synonyms** KIAA1839, RBM40, RNP, SNRNP65**Function**

Participates in pre-mRNA U12-dependent splicing, performed by the minor spliceosome which removes U12-type introns. U12-type introns comprises less than 1% of all non-coding sequences. Binds to the 3'- stem-loop of m(7)G-capped U12 snRNA.

Cellular Location

Nucleus.

Tissue Location

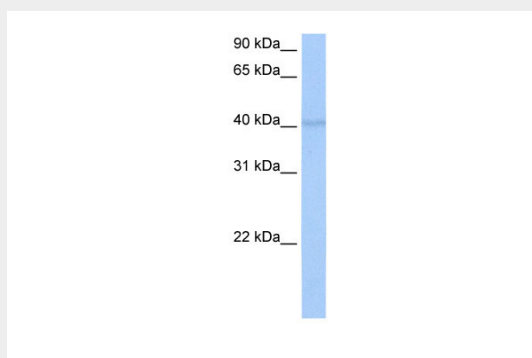
Highly expressed in pancreas and kidney. Detected at lower levels in heart, brain, placenta, lung, liver, spleen, thymus, prostate, testis, ovary, small intestine, colon and leukocytes

RBM4 antibody - C-terminal region - Protocols

Provided below are standard protocols that you may find useful for product applications.

- [Western Blot](#)
- [Blocking Peptides](#)
- [Dot Blot](#)
- [Immunohistochemistry](#)
- [Immunofluorescence](#)
- [Immunoprecipitation](#)
- [Flow Cytometry](#)
- [Cell Culture](#)

RBM4 antibody - C-terminal region - Images



WB Suggested Anti-RBM4 Antibody Titration: 0.2-1 µg/ml

Positive Control: MCF7 cell lysate

RBM4 is strongly supported by BioGPS gene expression data to be expressed in Human MCF7 cells

RBM4 antibody - C-terminal region - References

Lin, J.C., (2007) Proc. Natl. Acad. Sci. U.S.A. 104 (7), 2235-2240 Reconstitution and Storage: For short term use, store at 2-8°C up to 1 week. For long term storage, store at -20°C in small aliquots to prevent freeze-thaw cycles.