

Srp54a antibody - C-terminal region
Rabbit Polyclonal Antibody
Catalog # AI11751**Specification**

Srp54a antibody - C-terminal region - Product Information

Application	WB
Primary Accession	Q6AYB5
Other Accession	NM_053871 , NP_446323
Reactivity	Human, Mouse, Rat, Rabbit, Zebrafish, Pig, Sheep, Horse, Bovine, Dog
Predicted	Human, Mouse, Rat, Rabbit, Pig, Horse, Bovine, Dog
Host	Rabbit
Clonality	Polyclonal
Calculated MW	55kDa KDa

Srp54a antibody - C-terminal region - Additional Information**Gene ID** 116650**Alias Symbol** **Srp54, Srp54a**
Other Names
Signal recognition particle 54 kDa protein, SRP54, Srp54**Format**

Liquid. Purified antibody supplied in 1x PBS buffer with 0.09% (w/v) sodium azide and 2% sucrose.

Reconstitution & Storage

Add 50 ul of distilled water. Final anti-Srp54a antibody concentration is 1 mg/ml in PBS buffer with 2% sucrose. For longer periods of storage, store at 20°C. Avoid repeat freeze-thaw cycles.

Precautions

Srp54a antibody - C-terminal region is for research use only and not for use in diagnostic or therapeutic procedures.

Srp54a antibody - C-terminal region - Protein Information**Name** Srp54**Function**

Component of the signal recognition particle (SRP) complex, a ribonucleoprotein complex that mediates the cotranslational targeting of secretory and membrane proteins to the endoplasmic reticulum (ER) (By similarity). As part of the SRP complex, associates with the SRP receptor (SR) component SRPRA to target secretory proteins to the endoplasmic reticulum membrane (By similarity). Binds to the signal sequence of presecretory proteins when they emerge from the ribosomes (By similarity). Displays basal GTPase activity, and stimulates reciprocal GTPase activation of the SR subunit SRPRA (By similarity). Forms a guanosine 5'-triphosphate

(GTP)-dependent complex with the SR subunit SRPRA (By similarity). SR compaction and GTPase mediated rearrangement of SR drive SRP-mediated cotranslational protein translocation into the ER (By similarity). Requires the presence of SRP9/SRP14 and/or SRP19 to stably interact with RNA (By similarity). Plays a role in proliferation and differentiation of granulocytic cells, neutrophils migration capacity and exocrine pancreas development (By similarity).

Cellular Location

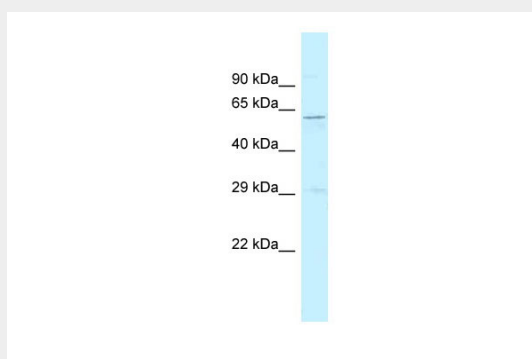
Nucleus speckle {ECO:0000250|UniProtKB:P61011}. Cytoplasm {ECO:0000250|UniProtKB:P61011}. Endoplasmic reticulum {ECO:0000250|UniProtKB:P61011}

Srp54a antibody - C-terminal region - Protocols

Provided below are standard protocols that you may find useful for product applications.

- [Western Blot](#)
- [Blocking Peptides](#)
- [Dot Blot](#)
- [Immunohistochemistry](#)
- [Immunofluorescence](#)
- [Immunoprecipitation](#)
- [Flow Cytometry](#)
- [Cell Culture](#)

Srp54a antibody - C-terminal region - Images



WB Suggested Anti-Srp54a Antibody Titration: 1.0 µg/ml
Positive Control: Rat Muscle